

# PRODUCT CATALOGUE

Ver 2023

---



# CONTENTS

## Transceiver Product

400G QSFP-DD DCO	01
400G CFP2 DCO	02
400G QSFP-DD	03
200G QSFP56/QSFP-DD	04
100G QSFP28	05
100G CFPX	07
50G QSFP28	08
40G QSFP+	09
25G SFP28	10
10G SFP+	11
10G XFP	14
COMPACT SFP	16
2.5G SFP	17
1.25G SFP	19
155M SFP	21
PON	23
COPPER SFP	25



<b>Cable Product</b> /	ACTIVE OPTICAL CABLE	27
	DIRECT ATTACH CABLE	28

<b>Appendix</b> /	50GHZ DWDM WAVELENGTH	29
	100GHZ DWDM WAVELENGTH	30
	CWDM BAIL COLOR REMARKS	28

## COMPANY PROFILE

SICHUAN OPWAY COMMUNICATION INC. IS A HIGH-TECH ENTERPRISE DEDICATED TO THE R&D, PRODUCTION AND SALES OF OPTICAL COMMUNICATION PRODUCTS. IT IS A NATIONAL-LEVEL HIGH-TECH ENTERPRISE AND A BOUTIQUE "SMALL" GIANT" ENTERPRISE RECOGNIZED BY THE MINISTRY OF INDUSTRY AND INFORMATION TECHNOLOGY. ITS HEADQUARTER IS LOCATED IN THE INTELLIGENT MANUFACTURING INDUSTRIAL PARK (QINGQUAN DISTRICT) OF ZIYANG CITY, SICHUAN PROVINCE ), WHICH HAS TWO WHOLLY-OWNED SUBSIDIARIES, SHENZHEN OPWAY AND WUHAN OPWAY. THE COMPANY HAS MORE THAN 400 EMPLOYEES AND HAS GATHERED A LARGE NUMBER OF SENIOR TALENTS IN THE INDUSTRY. WITH STRONG FOCUS ON OPTICAL COMMUNICATION INDUSTRY AND YEARS OF RICH EXPERIENCE, OPWAY CAN PROVIDE FULL RANGE OF OPTICAL TRANSCEIVER PRODUCTS AND SOLUTIONS. OPWAY HAS WON HIGH RECOGNITION OF GLOBAL CUSTOMERS WITH ADVANCED TECHNOLOGY AND HIGH-QUALITY SERVICES. THE ANNUAL SALES VOLUME OF MODULES IS AS HIGH AS MORE THAN 8 MILLION. THE PRODUCTS ARE WIDELY USED IN THE MAN, LAN, STORAGE NETWORKS, WIRELESS NETWORKS, DATA CENTER, CLOUD COMPUTING AND OTHER FIELDS, THE CUSTOMERS ARE FROM ALL OVER THE COUNTRY AND OVERSEAS REGIONS SUCH AS EUROPE, NORTH AMERICA, SOUTHEAST ASIA, CIS, AFRICA, THE MIDDLE EAST, SOUTH AMERICA ,ETC.



# OPWAY



**ENTERPRISE SPIRIT**

ENTREPRENEURIAL SPIRIT: PRAGMATIC  
INNOVATION, HARD WORK, NEVER GIVE UP  
OUR TEAM: UNITY AND COOPERATION, FULL  
OF WOLF SPIRIT, COME UPON CALL, COME  
TO FIGHT, FIGHT TO WIN  
OUR STATE: SUNSHINE, JOY, PASSION, FULL  
OF POSITIVE ENERGY  
OUR STYLE: HUMBLE, DILIGENT, PROFES-  
SIONAL, GRATEFUL, AND RESPONSIBLE

COMMUNICATION INC.

# Sep

## 2014

Awarded  
“National High-tech Enterprise”



### 02

# Jan

## 2022

In August 2022, Shenzhen Opway was recognized as the fourth batch of national "Little Giant" by the Ministry of Industry and Information Technology



### 01

# Dec

## 2018

Awarded  
“High-speed Optical Transceiver  
Engineering Research Center for 5G and IDC”

### 03



# Optical Transceiver

# 400G QSFP-DD DCO SOLUTIONS

## Application

400GBASE Ethernet/Data center/cloud network



**400G ZR QSFP-DD**

## Features

- QSFP-DD MSA compliant
- Compliant to OIF 400ZR
- Maximum power consumption 16.5W
- Support 400G 16QAM Modulation
- Support 400GBASE-R, 425Gb/s bit rate
- Support 400G-AUI-8 C2M;  
8 x CEI-56G-VSR PAM-4 electrical interface
- Use in Data center interconnections (DCI) links,  
Targeted reach for these applications is 80-120km or more

## Ordering information

PN.	Form factor	Rates	Channel frequency	Channel spacing	Distance
OPDJZR-DCO	QSFP-DD	425Gbps	191.3-196.1THz	100&75GHz	80-120km





## Application

DCI/Metro/Long-haul transport

# 400G CFP2 DCO SOLUTIONS

## Features

- Compliant with OpenZR+ and FlexO standards
- Supports 100GBE, 200GBE, 400GBE (client side)
- Supports 200G/400G interfaces with QPSK/16QAM modulation formats (line side)
- Acacia Greylock DSP version 1.0 (GL1) , version 2.0 (GL2) optional
- Hot-pluggable CFP2 form factor
- RoHS compliant



**400G CFP2 DCO**

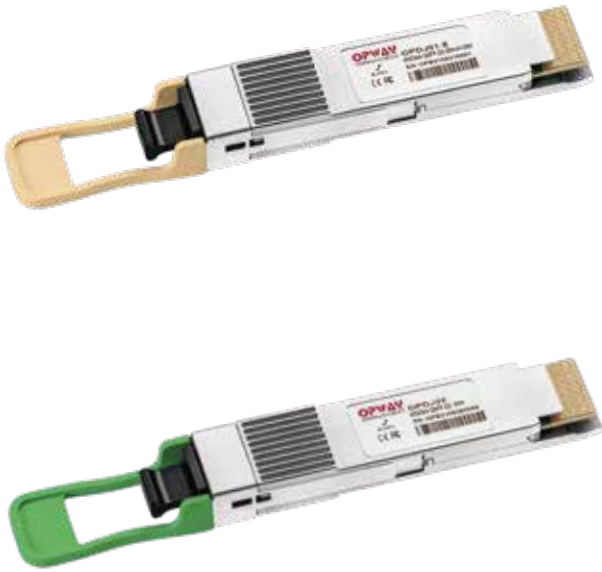
## Ordering information

No.	PN	Description	DSP version
1	OPC2J-DCO-GL1	400G CFP2 DCO version 1.0	GL1
2	OPC2J-DCO-GL2	400G CFP2 DCO version 2.0	GL2

# 400G QSFP-DD SOLUTIONS

## Application

400GBASE Ethernet/Data center/cloud network



400G QSFP-DD

## Features

- Hot-pluggable QSFP-DD package
- Compliant with QSFP-DD MSA
- Compliant to IEEE 802.3bs
- Supports 425Gb/s data rate
- Maximum link up to 40km
- Single +3.3V power supply
- Operating temperature range:0~70°C
- Built-in digital diagnostic functions
- RoHS compliant

Part Number	Data Rate	Package	Distance	Wavelength	Connector	Tx	Rx	Cable
OPDJ01-8	400Gb/s	QSFP-DD	100M	850nm	MPO-16/24	VCSEL	PIN	MM
OPDJ05-4	400Gb/s	QSFP-DD	500M	1310nm	MPO-12	EML	PIN	SM
OPDJ02	400Gb/s	QSFP-DD	2KM	CWDM	Dual LC	EML	PIN	SM
OPDJ10	400Gb/s	QSFP-DD	10KM	LWDM	Dual LC	EML	PIN	SM
OPDJ40	400Gb/s	QSFP-DD	40KM	LWDM	Dual LC	EML	APD	SM



## Application

200GBASE Ethernet/Data center/cloud network  
5G midhaul and backhaul  
InfiniBand

# 200G QSFP56/QSFP-DD SOLUTIONS

## Features

- Hot-pluggable QSFP56 or QSFP-DD package
- Compliant with QSFP56 or QSFP-DD MSA
- Supports 212.5Gb/s data rate
- Maximum link up to 40km
- Single +3.3V power supply
- Operating temperature range:0~70°C
- Built-in digital diagnostic functions
- RoHS compliant



200G QSFP56

Part Number	Data Rate	Package	Distance	Wavelength	Connector	Tx	Rx	Cable
OPQH01-YZ	200Gb/s	QSFP56	100M	850nm	MPO-12	VCSEL	PIN	MM
OPQH02	200Gb/s	QSFP56	2KM	CWDM	Dual LC	EML	PIN	SM
OPDH10	200Gb/s	QSFP-DD	10KM	LWDM	Dual LC	EML	PIN	SM
OPDH40	200Gb/s	QSFP-DD	40KM	LWDM	Dual LC	EML	APD	SM

Note: Y=D stands for DSP, Y=C stands for CDR, Y=L stands for linear direct drive, Z=C stands for CMIS4.0, Z=S stands for SFF-8636

# 100G QSFP28 SOLUTIONS

## Application

100G Data center internal network/  
Data center interconnection/MAN

## Features



**100G QSFP28**

- Hot-pluggable QSFP28 package
- Compliant with QSFP28 MSA
- Four channels design, supports 25.78Gb/s data rate or 27.95Gb/s data rate single channel
- Maximum link up to 80km
- Single +3.3V power supply
- Operating temperature range:0~70°C
- Built-in digital diagnostic functions
- RoHS compliant

Part Number	Data Rate	Package	Distance	Wavelength	Connector	Tx	Rx	Cable
OPQE01	103Gb/s	QSFP28	100M	850nm	MPO-12	VCSEL	PIN	MM
OPQE02	103Gb/s	QSFP28	2KM	CWDM	Dual LC	DFB	PIN	SM
OPQE02-M	103Gb/s	QSFP28	2KM/150M	CWDM	Dual LC	DFB	PIN	SM/MM
OPQE02-4	103Gb/s	QSFP28	2KM	1310nm	MPO-12	DFB	PIN	SM
OPQE10	103/112Gb/s	QSFP28	10KM	LWDM	Dual LC	DML	PIN	SM
OPQE10-S	103Gb/s	QSFP28	10KM	LWDM	Dual LC	DML	PIN	SM
OPQE10-RX	103Gb/s	QSFP28	10KM	/	Single LC	/	PIN	SM
OPQE30	103/112Gb/s	QSFP28	30KM	LWDM	Dual LC	DML	PIN	SM
OPQE40	103/112Gb/s	QSFP28	30KM/40KM (FEC)	LWDM	Dual LC	DML	APD	SM
OPQE40-E	103/112Gb/s	QSFP28	40KM	LWDM	Dual LC	EML	APD	SM
OPQE40-RX	103/112Gb/s	QSFP28	40KM	/	Single LC	/	APD	SM
OPQE80	103Gb/s	QSFP28	80KM (FEC)	LWDM	Dual LC	EML	SOA+PIN	SM



# Application

100GBASE Ethernet  
Telecommunication transmission network

# 100G QSFP28 SOLUTIONS

## Features

- Hot-pluggable QSFP28
- Compliant with 100G Lambda MSA
- Single channel design, supports 106.25Gb/s data rate
- Maximum link up to 40km
- Single +3.3V power supply
- Operating temperature range:0~70°C
- Built-in digital diagnostic functions
- RoHS compliant



100G QSFP28 Single Lambda

Part Number	Data Rate	Package	Distance	Wavelength	Connector	Tx	Rx	Cable
OPQE05-SW	106.25Gb/s	QSFP28	500M	1311nm	Dual LC	EML	PIN	SM
OPQE02-SW	106.25Gb/s	QSFP28	2KM	1311nm	Dual LC	EML	PIN	SM
OPQE10-SW	106.25Gb/s	QSFP28	10KM	1311nm	Dual LC	EML	PIN	SM
OPQE40-SW	106.25Gb/s	QSFP28	40KM	1309nm	Dual LC	EML	APD	SM
OPHE10-2733	106.25Gb/s	QSFP28	10KM	1271/1331nm	Single LC	EML	PIN	SM
OPHE10-3327	106.25Gb/s	QSFP28	10KM	1331/1271nm	Single LC	EML	PIN	SM
OPHE30-0409	106.25Gb/s	QSFP28	30KM	1304/1309nm	Single LC	EML	APD	SM
OPHE30-0904	106.25Gb/s	QSFP28	30KM	1309/1304nm	Single LC	EML	APD	SM
OPHE40-0409	106.25Gb/s	QSFP28	40KM	1304/1309nm	Single LC	EML	APD	SM
OPHE40-0904	106.25Gb/s	QSFP28	40KM	1309/1304nm	Single LC	EML	APD	SM

# 100G CFPx SOLUTIONS

## Application

100GBASE Ethernet/OTU4



100G CFPx

## Features

- Hot-pluggable CFP/CFP2/CFP4 package
- Compliant with CFP/CFP2/CFP4 MSA
- Four channels design, supports 25.78Gb/s data rate or 27.95Gb/s data rate single channel
- Maximum link up to 80km
- Single +3.3V power supply
- Operating temperature range:0~70°C
- Built-in digital diagnostic functions
- RoHS compliant

Part Number	Data Rate	Package	Distance	Wavelength	Connector	Tx	Rx	Cable
OPC4E10	112Gb/s	CFP4	10KM	LWDM	Dual LC	EML	PIN	SM
OPC2E10	112Gb/s	CFP2	10KM	LWDM	Dual LC	DML	PIN	SM
OPC2E10-RX	112Gb/s	CFP2	10KM	/	Single LC	/	PIN	SM
OPC2E40	112Gb/s	CFP2	40KM	LWDM	Dual LC	EML	SOA+PIN	SM
OPC2E80	103Gb/s	CFP2	80KM	LWDM	Dual LC	EML	SOA+PIN	SM
OPCFE10	112Gb/s	CFP	10KM	LWDM	Dual LC	EML	PIN	SM
OPCFE40	112Gb/s	CFP	40KM	LWDM	Dual LC	EML	SOA+PIN	SM



# Application

5G midhaul and backhaul

# 50G QSFP28 SOLUTIONS

## Features

- Hot-pluggable QSFP28 package
- Compliant with QSFP28 MSA
- Single channel design, supports 53.125Gb/s data rate
- Maximum link up to 40km
- Single +3.3V power supply
- Operating temperature range:0~70°C
- Built-in digital diagnostic functions
- RoHS compliant



50G QSFP28

Part Number	Data Rate	Package	Distance	Wavelength	Connector	Tx	Rx	Cable
OPQG10	50Gb/s	QSFP28	10KM	1310nm	Dual LC	DML	PIN	SM
OPQG40	50Gb/s	QSFP28	40KM	1310nm	Dual LC	EML	APD	SM
OPHG10-2733	50Gb/s	QSFP28	10KM	TX1270/RX1330	Single LC	DML	PIN	SM
OPHG10-3327	50Gb/s	QSFP28	10KM	TX1270/RX1330	Single LC	DML	PIN	SM
OPHG40-2930	50Gb/s	QSFP28	40KM	TX1295/RX1309	Single LC	EML	APD	SM
OPHG40-3029	50Gb/s	QSFP28	40KM	TX1309/RX1295	Single LC	EML	APD	SM

# 40G QSFP+ SOLUTIONS

## Application

Data center/campus network/MAN

## Features



40G QSFP+

- Hot-pluggable QSFP+ package
- Compliant with QSFP+ MSA
- Four channels design, supports 11.2Gb/s data rate single channel
- Maximum link up to 40km
- Single +3.3V power supply
- Operating temperature range:0~70°C
- Built-in digital diagnostic functions
- RoHS compliant

Part Number	Data Rate	Package	Distance	Wavelength	Connector	Tx	Rx	Cable
OPQC01	40Gb/s	QSFP+	100M	850nm	MPO-12	VCSEL	PIN	MM
OPQC03	40Gb/s	QSFP+	300M	850nm	MPO-12	VCSEL	PIN	MM
OPQC02	40Gb/s	QSFP+	2KM	CWDM	Dual LC	DFB	PIN	SM
OPQC02-4	40Gb/s	QSFP+	2KM	1310nm	MPO-12	DFB	PIN	SM
OPQC02-M	40Gb/s	QSFP+	2KM/100M	CWDM	Dual LC	DFB	PIN	SM/MM
OPQC10	40Gb/s	QSFP+	10KM	CWDM	Dual LC	DFB	PIN	SM
OPQC10-4	40Gb/s	QSFP+	10KM	1310nm	MPO-12	DFB	PIN	SM
OPQC40	40Gb/s	QSFP+	40KM	CWDM	Dual LC	DFB	APD	SM





# Application

Data center/25GBASE Ethernet, 5G fronthaul/ Fiber channel

# 25G SFP28 SOLUTIONS

## Features

- Hot-pluggable SFP28 package
- Compliant with SFP28 MSA
- Supports 25.78Gb/s data rate
- Maximum link up to 40km
- Single +3.3V power supply
- Operating temperature range:0~70°C or -40~+85°C optional
- Built-in digital diagnostic functions
- RoHS compliant



25G SFP28

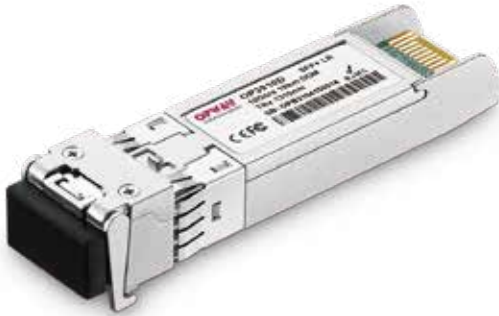
Part Number	Data Rate	Package	Distance	Wavelength	Connector	Tx	Rx	Cable
OP3001D	25Gb/s	SFP28	100M	850nm	Dual LC	VCSEL	PIN	MM
OP3003D	25Gb/s	SFP28	300M	1310nm	Dual LC	DFB	PIN	SM
OP3010D	25Gb/s	SFP28	10KM	1310nm	Dual LC	DFB	PIN	SM
OP3040D	25Gb/s	SFP28	30KM/40KM (FEC)	1310nm	Dual LC	DFB	APD	SM
OP3040D-E	25Gb/s	SFP28	40KM	1310nm	Dual LC	EML	APD	SM
OP5010D-2733	25Gb/s	SFP28	10KM	TX1270/RX1330	Single LC	DFB	PIN	SM
OP5010D-3327	25Gb/s	SFP28	10KM	TX1330/RX1270	Single LC	DFB	PIN	SM
OP5040D-2731	25Gb/s	SFP28	40KM	TX1270/RX1310	Single LC	DFB	APD	SM
OP5040D-3127	25Gb/s	SFP28	40KM	TX1310/RX1270	Single LC	DFB	APD	SM
OP3010D-XX	25Gb/s	SFP28	10KM	1270~1370nm	Dual LC	DFB	PIN	SM
OP3010D-XX	25Gb/s	SFP28	10KM	1470~1570nm	Dual LC	EML	PIN	SM
OP3010D-DXX	25Gb/s	SFP28	10KM	DWDM ITU	Dual LC	EML	PIN	SM
OP3010D-TUN48	25Gb/s	SFP28	10KM	Tunable DWDM (48λ)	Dual LC	EML	PIN	SM
OP3010D-LXXX	25Gb/s	SFP28	10KM	LWDM	Dual LC	DFB	PIN	SM
OP3040D-LXXX	25Gb/s	SFP28	40KM	LWDM	Dual LC	EML	APD	SM
OP3010D-MXXX	25Gb/s	SFP28	10KM	MWDM	Dual LC	DFB	PIN	SM

# 10G SFP+ SOLUTIONS

## Application

SONET OC-192/SDH STM-64  
10GBASE Ethernet

## Features



10G SFP+

- Hot-pluggable SFP+ package
- Compliant with SFP+ MSA
- Single +3.3V power supply
- Support multi protocol up to 11.3Gb/s
- Maximum link up to 100km
- Dual LC connector
- Operating temperature range:0~70°C or -40~+85°C optional
- Built-in digital diagnostic functions
- RoHS compliant

Part Number	Data Rate	Package	Distance	Wavelength	Connector	Tx	Rx	Cable
OP3902D	10Gb/s	SFP+	220M	1310nm	Dual LC	FP	PIN	MM
OP3903D	10Gb/s	SFP+	300M	850nm	Dual LC	VCSEL	PIN	MM
OP3904D	10Gb/s	SFP+	2KM	1310nm	Dual LC	FP	PIN	SM
OP3910D	10Gb/s	SFP+	10KM	1310nm	Dual LC	DFB	PIN	SM
OP3940D-13	10Gb/s	SFP+	40KM	1310nm	Dual LC	DFB	PIN	SM
OP3940D	10Gb/s	SFP+	40KM	1550nm	Dual LC	EML	PIN	SM
OP3980D	10Gb/s	SFP+	80KM	1550nm	Dual LC	EML	APD	SM
OP390AD	10Gb/s	SFP+	100KM	1550nm	Dual LC	EML	APD	SM

### 10G SFP+ with CDR

OP3910S	10Gb/s	SFP+	10KM	1310nm	Dual LC	DFB	PIN	SM
OP3940S	10Gb/s	SFP+	40KM	1550nm	Dual LC	EML	PIN	SM
OP3980S	10Gb/s	SFP+	80KM	1550nm	Dual LC	EML	APD	SM
OP390AS	10Gb/s	SFP+	100KM	1550nm	Dual LC	EML	APD	SM



# Application

SONET OC-192/SDH STM-64  
10GBASE Ethernet

# 10G SFP+ SOLUTIONS

## Features

- Hot-pluggable SFP+ package
- Compliant with SFP+ MSA
- Single +3.3V power supply
- Support multi protocol up to 11.3Gb/s
- 1270~1610nm CWDM, ITU DWDM select
- Maximum link up to 100km
- Dual LC connector
- Operating temperature range:0~70°C or -40~+85°C optional
- Built-in digital diagnostic functions
- RoHS compliant



10G CWDM&DWDM SFP+

Part Number	Data Rate	Package	Distance	Wavelength	Connector	Tx	Rx	Cable
OP3910D-XX	10Gb/s	SFP+	10KM	1270~1610nm	Dual LC	DFB	PIN	SM
OP3920D-XX	10Gb/s	SFP+	20KM	1270~1450nm	Dual LC	DFB	PIN	SM
OP3940D-XX	10Gb/s	SFP+	40KM	1270~1450nm	Dual LC	DFB	PIN	SM
OP3940D-XX	10Gb/s	SFP+	40KM	1470~1610nm	Dual LC	EML	PIN	SM
OP3960D-XX	10Gb/s	SFP+	60KM	1270~1450nm	Dual LC	DFB	APD	SM
OP3980D-XX	10Gb/s	SFP+	80KM	1470~1610nm	Dual LC	EML	APD	SM
OP3940D-DXX	10Gb/s	SFP+	40KM	DWDM ITU	Dual LC	EML	PIN	SM
OP3980D-DXX	10Gb/s	SFP+	80KM	DWDM ITU	Dual LC	EML	APD	SM
OP390AD-DXX	10Gb/s	SFP+	100KM	DWDM ITU	Dual LC	EML	APD	SM

# 10G SFP+ SOLUTIONS

## Application

SONET OC-192/SDH STM-64  
10GBASE Ethernet

## Features



**10G Bi-Di SFP+**

- Hot-pluggable SFP+ package
- Compliant with SFP+ MSA
- Single +3.3V power supply
- Support multi protocol up to 11.3Gb/s
- Maximum link up to 80km
- Single LC connector
- Operating temperature range:0~70°C or -40~+85°C optional
- Built-in digital diagnostic functions
- RoHS compliant

Part Number	Data Rate	Package	Distance	Wavelength	Connector	Tx	Rx	Cable
OP5910D-2733	10Gb/s	SFP+	10KM	TX1270/RX1330	Single LC	DFB	PIN	SM
OP5910D-3327	10Gb/s	SFP+	10KM	TX1330/RX1270	Single LC	DFB	PIN	SM
OP5920D-2733	10Gb/s	SFP+	20KM	TX1270/RX1330	Single LC	DFB	PIN	SM
OP5920D-3327	10Gb/s	SFP+	20KM	TX1330/RX1270	Single LC	DFB	PIN	SM
OP5940D-2733	10Gb/s	SFP+	40KM	TX1270/RX1330	Single LC	DFB	PIN	SM
OP5940D-3327	10Gb/s	SFP+	40KM	TX1330/RX1270	Single LC	DFB	PIN	SM
OP5960D-2733	10Gb/s	SFP+	60KM	TX1270/RX1330	Single LC	DFB	APD	SM
OP5960D-3327	10Gb/s	SFP+	60KM	TX1330/RX1270	Single LC	DFB	APD	SM
OP5980D-2733	10Gb/s	SFP+	70KM	TX1270/RX1330	Single LC	DFB	APD	SM
OP5980D-3327	10Gb/s	SFP+	70KM	TX1330/RX1270	Single LC	DFB	APD	SM
OP5980D-45	10Gb/s	SFP+	80KM	TX1490/RX1550	Single LC	EML	APD	SM
OP5980D-54	10Gb/s	SFP+	80KM	TX1550/RX1490	Single LC	EML	APD	SM



# 10G XFP SOLUTIONS

## 应用 Application

SONET OC-192/SDH STM-64  
10GBASE Ethernet



10G XFP

## Features

- Hot-pluggable XFP package
- Compliant with XFP MSA
- Support multi protocol from 9.9Gb/s ~ 11.3Gb/s
- Maximum link up to 80km
- Operating temperature range:0~70°C or -40~+85°C optional
- Built-in digital diagnostic functions
- RoHS compliant

Part Number	Data Rate	Package	Distance	Wavelength	Connector	Tx	Rx	Cable
OP8903	10Gb/s	XFP	300M	850nm	Dual LC	VCSEL	PIN	MM
OP8902	10Gb/s	XFP	220M	1310nm	Dual LC	FP	PIN	MM
OP8904	10Gb/s	XFP	2KM	1310nm	Dual LC	FP	PIN	SM
OP8910	10Gb/s	XFP	10KM	1310nm	Dual LC	DFB	PIN	SM
OP8940-13	10Gb/s	XFP	40KM	1310nm	Dual LC	DFB	PIN	SM
OP8940	10Gb/s	XFP	40KM	1550nm	Dual LC	EML	PIN	SM
OP8980	10Gb/s	XFP	80KM	1550nm	Dual LC	EML	APD	SM

### 10G Bi-Di XFP

OPP910-2733	10Gb/s	XFP	10KM	TX1270/RX1330	Single LC	DFB	PIN	SM
OPP910-3327	10Gb/s	XFP	10KM	TX1330/RX1270	Single LC	DFB	PIN	SM
OPP940-2733	10Gb/s	XFP	40KM	TX1270/RX1330	Single LC	DFB	PIN	SM
OPP940-3327	10Gb/s	XFP	40KM	TX1330/RX1270	Single LC	DFB	PIN	SM
OPP960-2733	10Gb/s	XFP	60KM	TX1270/RX1330	Single LC	DFB	APD	SM
OPP960-3327	10Gb/s	XFP	60KM	TX1330/RX1270	Single LC	DFB	APD	SM
OPP980-45	10Gb/s	XFP	80KM	TX1490/RX1550	Single LC	EML	APD	SM
OPP980-54	10Gb/s	XFP	80KM	TX1550/RX1490	Single LC	EML	APD	SM

# Application

SONET OC-192/SDH STM-64  
10GBASE Ethernet

# 10G XFP SOLUTIONS

## Features

- Hot-pluggable XFP package
- Compliant with XFP MSA
- Support multi protocol from 9.9Gb/s ~ 11.3Gb/s
- 1270~1610nm CWDM, ITU DWDM select
- Maximum link up to 80km
- Dual LC connector
- Operating temperature range:0~70°C or -40~+85°C optional
- Built-in digital diagnostic functions
- RoHS compliant



**10G CWDM&DWDM XFP**

Part Number	Data Rate	Package	Distance	Wavelength	Connector	Tx	Rx	Cable
OP8910-XX	10Gb/s	XFP	10KM	1270~1610nm	Dual LC	DFB	PIN	SM
OP8940-XX	10Gb/s	XFP	40KM	1270~1450nm	Dual LC	DFB	PIN	SM
OP8940-XX	10Gb/s	XFP	40KM	1470~1610nm	Dual LC	EML	PIN	SM
OP8960-XX	10Gb/s	XFP	60KM	1270~1450nm	Dual LC	DFB	APD	SM
OP8980-XX	10Gb/s	XFP	80KM	1470~1610nm	Dual LC	EML	APD	SM
OP8940-DXX	10Gb/s	XFP	40KM	DWDM ITU	Dual LC	EML	PIN	SM
OP8980-DXX	10Gb/s	XFP	80KM	DWDM ITU	Dual LC	EML	APD	SM



## Application

Point to point FTTH application  
Fiber channel

# COMPACT SFP SOLUTIONS

## Features

- Same compact package with SFP, with Dual LC two channels  
Each channel can achieve Bi-Di transmission
- Compliant with SFF-8472
- Compliant with CSFP MSA Option2
- Single +3.3V power supply
- Operating temperature range:0~70°C or -40~+85°C optional
- Built-in digital diagnostic functions
- RoHS compliant



Compact SFP

Part Number	Data Rate	Package	Distance	Wavelength	Connector	Tx	Rx	Cable
OPS220D-35	155Mb/s	CSFP	20KM	TX1310/RX1550	Dual LC	FP	PIN	SM
OPS220D-53	155Mb/s	CSFP	20KM	TX1550/RX1310	Dual LC	FP	PIN	SM
OPS420D-35	1.25Gb/s	CSFP	20KM	TX1310/RX1550	Dual LC	FP	PIN	SM
OPS420D-53	1.25Gb/s	CSFP	20KM	TX1550/RX1310	Dual LC	DFB	PIN	SM
OPS420D-34	1.25Gb/s	CSFP	20KM	TX1310/RX1490	Dual LC	FP	PIN	SM
OPS420D-43	1.25Gb/s	CSFP	20KM	TX1490/RX1310	Dual LC	DFB	PIN	SM
OPS620D-35	2.5Gb/s	CSFP	20KM	TX1310/RX1550	Dual LC	DFB	PIN	SM
OPS620D-53	2.5Gb/s	CSFP	20KM	TX1550/RX1310	Dual LC	DFB	PIN	SM

# 2.5G SFP SOLUTIONS

## Application

SONET OC-48/SDH STM-16/2xFC  
MAN/AN

## Features



2.5G SFP

- Hot-pluggable SFP package
- Compliant with SFP MSA
- Single +3.3V power supply
- Maximum link up to 120km
- Operating temperature range:0~70°C or -40~+85°C optional
- Built-in digital diagnostic functions
- RoHS compliant







# 2.5G SFP SOLUTIONS

Part Number	Data Rate	Package	Distance	Wavelength	Connector	Tx	Rx	Cable
OP3603D	2.5Gb/s	SFP	300M	850nm	Dual LC	VCSEL	PIN	MM
OP3602D	2.5Gb/s	SFP	2KM	1310nm	Dual LC	FP	PIN	SM
OP3620D	2.5Gb/s	SFP	20KM	1310nm	Dual LC	DFB	PIN	SM
OP3640D	2.5Gb/s	SFP	40KM	1550nm	Dual LC	DFB	PIN	SM
OP3680D	2.5Gb/s	SFP	80KM	1550nm	Dual LC	DFB	APD	SM
OP360CD	2.5Gb/s	SFP	120KM	1550nm	Dual LC	DFB	APD	SM

## 2.5G Bi-Di LC SFP

OP5602D-35	2.5Gb/s	SFP	2KM	TX1310/RX1550	Single LC	FP	PIN	SM
OP5602D-53	2.5Gb/s	SFP	2KM	TX1550/RX1310	Single LC	DFB	PIN	SM
OP5620D-35	2.5Gb/s	SFP	20KM	TX1310/RX1550	Single LC	DFB	PIN	SM
OP5620D-53	2.5Gb/s	SFP	20KM	TX1550/RX1310	Single LC	DFB	PIN	SM
OP5640D-45	2.5Gb/s	SFP	40KM	TX1490/RX1550	Single LC	DFB	PIN	SM
OP5640D-54	2.5Gb/s	SFP	40KM	TX1550/RX1490	Single LC	DFB	PIN	SM
OP5680D-45	2.5Gb/s	SFP	80KM	TX1490/RX1550	Single LC	DFB	APD	SM
OP5680D-54	2.5Gb/s	SFP	80KM	TX1550/RX1490	Single LC	DFB	APD	SM
OP560CD-45	2.5Gb/s	SFP	120KM	TX1490/RX1550	Single LC	DFB	APD	SM
OP560CD-54	2.5Gb/s	SFP	120KM	TX1550/RX1490	Single LC	DFB	APD	SM

## 2.5G CWDM&DWDM SFP

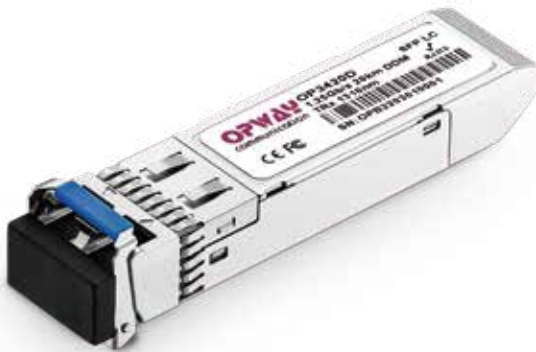
OP3640D-XX	2.5Gb/s	SFP	40KM	1270~1610nm	Dual LC	DFB	PIN	SM
OP3680D-XX	2.5Gb/s	SFP	80KM	1270~1610nm	Dual LC	DFB	APD	SM
OP360CD-XX	2.5Gb/s	SFP	120KM	1270~1610nm	Dual LC	DFB	APD	SM
OP3640D-DXX	2.5Gb/s	SFP	40KM	DWDM ITU	Dual LC	DFB	PIN	SM
OP3680D-DXX	2.5Gb/s	SFP	80KM	DWDM ITU	Dual LC	DFB	APD	SM
OP360CD-DXX	2.5Gb/s	SFP	120KM	DWDM ITU	Dual LC	DFB	APD	SM

# 1.25G SFP SOLUTIONS

## Application

1000Base Ethernet, MAN/AN

## Features



1.25G SFP

- Hot-pluggable SFP package
- Compliant with SFP MSA
- Single +3.3V power supply
- Maximum link up to 120km
- Dual LC connector
- Operating temperature range:0~70°C or -40~+85°C optional
- Built-in digital diagnostic functions
- RoHS compliant

Part Number	Data Rate	Package	Distance	Wavelength	Connector	Tx	Rx	Cable
OP3405D	1.25Gb/s	SFP	500M	850nm	Dual LC	VCSEL	PIN	MM
OP3402D	1.25Gb/s	SFP	2KM	1310nm	Dual LC	FP	PIN	MM
OP3420D	1.25Gb/s	SFP	20KM	1310nm	Dual LC	FP	PIN	SM
OP3440D	1.25Gb/s	SFP	40KM	1310nm	Dual LC	DFB	PIN	SM
OP3440D-15	1.25Gb/s	SFP	40KM	1550nm	Dual LC	DFB	PIN	SM
OP3480D	1.25Gb/s	SFP	80KM	1550nm	Dual LC	DFB	PIN	SM
OP340CD	1.25Gb/s	SFP	120KM	1550nm	Dual LC	DFB	APD	SM

### 1.25G CWDM&DWDM SFP

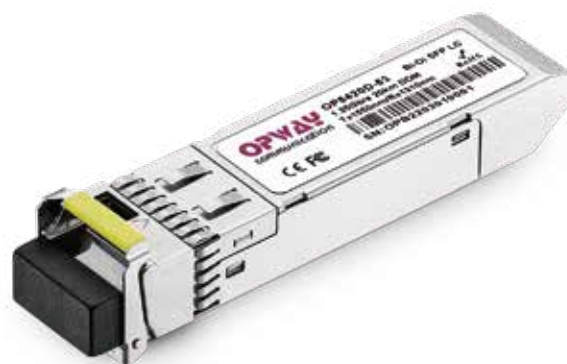
OP3440D-XX	1.25Gb/s	SFP	40KM	CWDM	Dual LC	DFB	PIN	SM
OP3480D-XX	1.25Gb/s	SFP	80KM	CWDM	Dual LC	DFB	PIN	SM
OP340CD-XX	1.25Gb/s	SFP	120KM	CWDM	Dual LC	DFB	APD	SM
OP3440D-DXX	1.25Gb/s	SFP	40KM	DWDM ITU	Dual LC	DFB	PIN	SM
OP3480D-DXX	1.25Gb/s	SFP	80KM	DWDM ITU	Dual LC	DFB	PIN	SM
OP340CD-DXX	1.25Gb/s	SFP	120KM	DWDM ITU	Dual LC	DFB	APD	SM



# 1.25G SFP SOLUTIONS

## Features

- Hot-pluggable SFP package
- Compliant with SPF MSA
- Single +3.3V power supply
- Maximum link up to 120km
- Single LC/SC connector
- Operating temperature range:0~70°C
- Built-in digital diagnostic functions
- RoHS compliant



1.25G Bi-Di SFP

Part Number	Data Rate	Package	Distance	Wavelength	Connector	Tx	Rx	Cable
OP5405D-35	1.25Gb/s	SFP	500M	TX1310/RX1550	Single LC	FP	PIN	MM
OP5405D-53	1.25Gb/s	SFP	500M	TX1550/RX1310	Single LC	FP	PIN	MM
OP5403D-35	1.25Gb/s	SFP	3KM	TX1310/RX1550	Single LC	FP	PIN	SM
OP5403D-53	1.25Gb/s	SFP	3KM	TX1550/RX1310	Single LC	FP	PIN	SM
OP5420D-35	1.25Gb/s	SFP	20KM	TX1310/RX1550	Single LC	FP	PIN	SM
OP5420D-53	1.25Gb/s	SFP	20KM	TX1550/RX1310	Single LC	DFB	PIN	SM
OP5420D-34	1.25Gb/s	SFP	20KM	TX1310/RX1490	Single LC	FP	PIN	SM
OP5420D-43	1.25Gb/s	SFP	20KM	TX1490/RX1310	Single LC	DFB	PIN	SM
OP5440D-35	1.25Gb/s	SFP	40KM	TX1310/RX1550	Single LC	DFB	PIN	SM
OP5440D-53	1.25Gb/s	SFP	40KM	TX1550/RX1310	Single LC	DFB	PIN	SM
OP5480D-45	1.25Gb/s	SFP	80KM	TX1490/RX1550	Single LC	DFB	PIN	SM
OP5480D-54	1.25Gb/s	SFP	80KM	TX1550/RX1490	Single LC	DFB	PIN	SM
OP540CD-45	1.25Gb/s	SFP	120KM	TX1490/RX1550	Single LC	DFB	APD	SM
OP540CD-54	1.25Gb/s	SFP	120KM	TX1550/RX1490	Single LC	DFB	APD	SM

### 1.25G Bi-Di SC SFP

OP4403D-35	1.25Gb/s	SFP	3KM	TX1310/RX1550	Single SC	FP	PIN	SM
OP4403D-53	1.25Gb/s	SFP	3KM	TX1550/RX1310	Single SC	FP	PIN	SM
OP4420D-35	1.25Gb/s	SFP	20KM	TX1310/RX1550	Single SC	FP	PIN	SM
OP4420D-53	1.25Gb/s	SFP	20KM	TX1550/RX1310	Single SC	DFB	PIN	SM

# 155M SFP

## SOLUTIONS

## Application

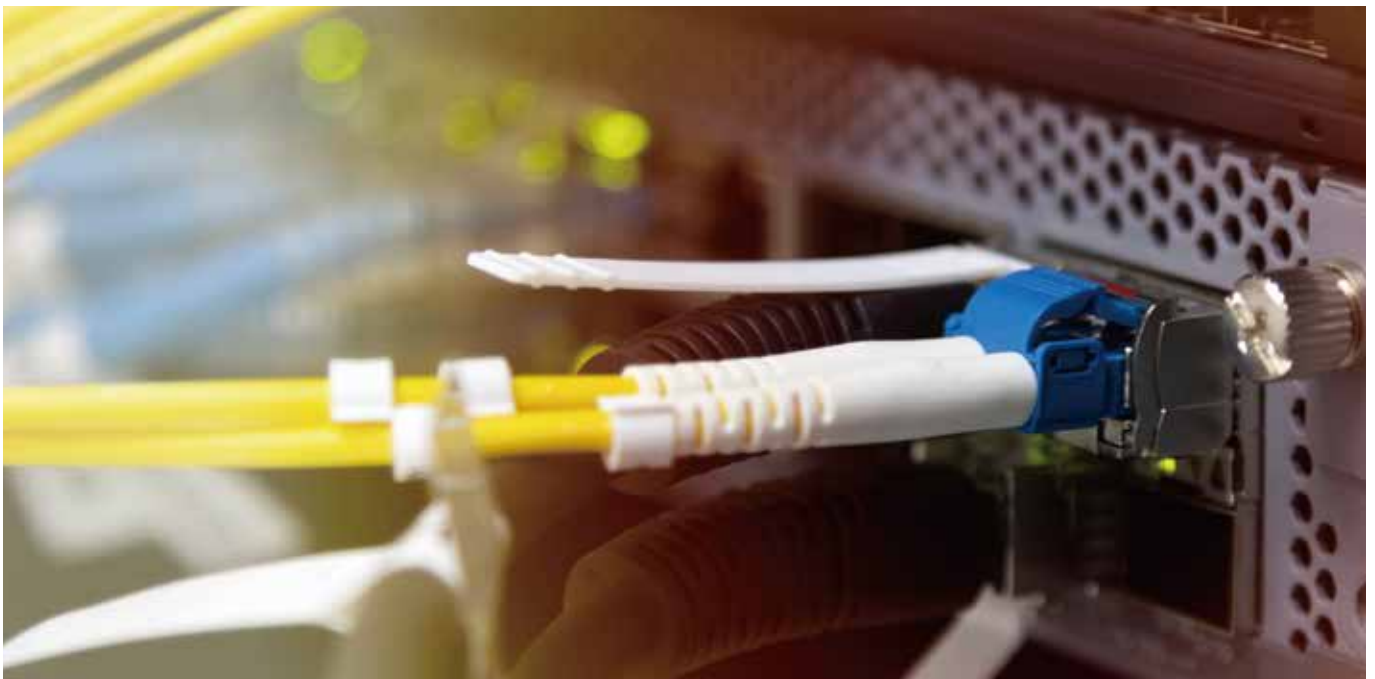
SONET OC-3/SDH-1  
Fast Ethernet, MAN/AN

## Features

- Hot-pluggable SFP package
- Compliant with SFP MSA
- Single +3.3V power supply
- Operating temperature range:0~70°C or -40~+85°C optional
- Built-in digital diagnostic functions
- RoHS compliant



155M SFP





# 155M SFP SOLUTIONS

Part Number	Data Rate	Package	Distance	Wavelength	Connector	Tx	Rx	Cable
OPE202	Fl:155Mb/s MI:1.25Gb/s	SFP	2KM	1310nm	Dual LC	FP	PIN	MM
OPE210	Fl:155Mb/s MI:1.25Gb/s	SFP	10KM	1310nm	Dual LC	FP	PIN	SM
OP3202D-85	155Mb/s	SFP	2KM	850nm	Dual LC	VCSEL	PIN	MM
OP3202D	155Mb/s	SFP	2KM	1310nm	Dual LC	FP	PIN	MM
OP3220D	155Mb/s	SFP	20KM	1310nm	Dual LC	FP	PIN	SM
OP3240D	155Mb/s	SFP	40KM	1310nm	Dual LC	FP	PIN	SM
OP3280D	155Mb/s	SFP	80KM	1550nm	Dual LC	DFB	PIN	SM

## 155M Bi-Di LC SFP

OP5202D-35	155Mb/s	SFP	2KM	TX1310/RX1550	Single LC	FP	PIN	MM
OP5202D-53	155Mb/s	SFP	2KM	TX1550/RX1310	Single LC	FP	PIN	MM
OP5220D-35	155Mb/s	SFP	20KM	TX1310/RX1550	Single LC	FP	PIN	SM
OP5220D-53	155Mb/s	SFP	20KM	TX1550/RX1310	Single LC	FP	PIN	SM
OP5240D-35	155Mb/s	SFP	40KM	TX1310/RX1550	Single LC	FP	PIN	SM
OP5240D-53	155Mb/s	SFP	40KM	TX1550/RX1310	Single LC	DFB	PIN	SM
OP5280D-45	155Mb/s	SFP	80KM	TX1490/RX1550	Single LC	DFB	PIN	SM
OP5280D-54	155Mb/s	SFP	80KM	TX1550/RX1490	Single LC	DFB	PIN	SM

## 155M Bi-Di SC SFP

OP4220D-35	155Mb/s	SFP	20KM	TX1310/RX1550	Single SC	FP	PIN	SM
OP4220D-53	155Mb/s	SFP	20KM	TX1550/RX1310	Single SC	FP	PIN	SM

## 155M CWDM&DWDM SFP

OP3280D-XX	155Mb/s	SFP	80KM	CWDM	Dual LC	DFB	PIN	SM
OP3280D-DXX	155Mb/s	SFP	80KM	DWDM ITU	Dual LC	DFB	PIN	SM

# PON SOLUTIONS

## Application

FTTB/FTTC/FTTH

## Features



- EPON/GPON/10G EPON/XGPON/XGSPON/Combo PON select
- OLT port hot-pluggable SFP or XFP package
- ONU port hot-pluggable SFP package
- Single fiber Bi-Di data link
- Single SC connector
- RoHS compliant



# PON SOLUTIONS

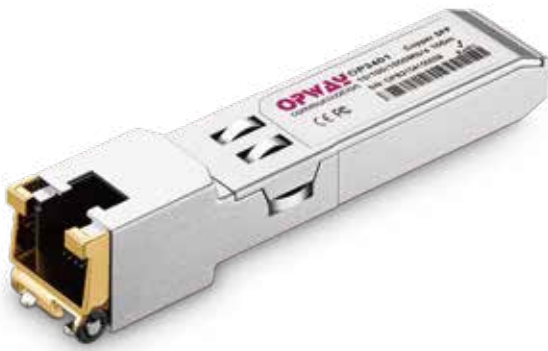
Part Number	Package	Data Rate	Class	Wavelength	Tx	Rx
<b>EPON OLT/ONU Module</b>						
OP44P1-ET	SFP	1.25GbpsT/1.25GbpsR	PX-20+	TX1490/RX1310	DFB	APD
OP44P2-ET	SFP	1.25GbpsT/1.25GbpsR	PX-20++	TX1490/RX1310	DFB	APD
OP44P3-ET	SFP	1.25GbpsT/1.25GbpsR	PX-20+++	TX1490/RX1310	DFB	APD
OP44P1-EU	SFP	1.25GbpsT/1.25GbpsR	PX-20+	TX1310/RX1490	FP	PIN
<b>GPON OLT / ONU Module</b>						
OP46B1-GT	SFP	2.5GbpsT/1.25GbpsR	B+	TX1490/RX1310	DFB	APD
OP46C1-GT	SFP	2.5GbpsT/1.25GbpsR	C+	TX1490/RX1310	DFB	APD
OP46C2-GT	SFP	2.5GbpsT/1.25GbpsR	C++	TX1490/RX1310	DFB	APD
OP44B1-GU	SFP	1.25GbpsT/2.5GbpsR	B+	TX1310/RX1490	DFB	APD
OP44B1-GU-SI	SFP	1.25GbpsT/2.5GbpsR	B+	TX1310/RX1490	DFB	APD
<b>10G EPON OLT / ONU Module</b>						
OP49R1-ET	SFP+	10GbpsT/10GbpsR	PR30	TX1577/RX1270	EML	APD
OP89R1-ET	XFP	10GbpsT/10GbpsR	PR30	TX1577/RX1270	EML	APD
OP49R1-EU	SFP+	10GbpsT/10GbpsR	PR30	TX1270/RX1577	DFB	APD
OP49R2-EU	SFP+	1.25GbpsT/10GbpsR	PRX30	TX1270/RX1577	DFB	APD
<b>XGPON OLT / ONU Module</b>						
OP49N1-GT	SFP+	10GbpsT/2.5GbpsR	N1	TX1577/RX1270	EML	APD
OP49N2-GT	SFP+	10GbpsT/2.5GbpsR	N2a	TX1577/RX1270	EML	APD
OP49N2-GU	SFP+	2.5GbpsT/10GbpsR	N1/N2	TX1270/RX1577	DFB	APD
<b>XGSPON OLT / ONU Module</b>						
OP49N1-ST	SFP+	10GbpsT/10GbpsR	N1	TX1577/RX1270	EML	APD
OP49N2-ST	SFP+	10GbpsT/10GbpsR	N2	TX1577/RX1270	EML	APD
OP49N2-SU	SFP+	10GbpsT/10GbpsR	N1/N2	TX1270/RX1577	DFB	APD
<b>XGPON Combo</b>						
OP491B-GT	SFP+	XGPON 10GbpsT/2.5GbpsR	D1	TX1577/RX1270	EML	APD
		GPON 2.5GbpsT/1.25GbpsR	B+	TX1490/RX1310	DFB	APD
OP493C-GT	SFP+	XGPON 10GbpsT/2.5GbpsR	D2	TX1577/RX1270	EML	APD
		GPON 2.5GbpsT/1.25GbpsR	C+	TX1490/RX1310	DFB	APD
<b>XGSPON Combo</b>						
OP491B-ST	SFP+	XGSPON 10GbpsT/10GbpsR	N1	TX1577/RX1270	EML	APD
		GPON 2.5GbpsT/1.25GbpsR	B+	TX1490/RX1310	DFB	APD
OP493C-ST	SFP+	XGSPON 10GbpsT/10GbpsR	D2	TX1577/RX1270	EML	APD
		GPON 2.5GbpsT/1.25GbpsR	C+	TX1490/RX1310	DFB	APD

# COPPER SFP SOLUTIONS

## Application

Switch/router to switch/router link

## Features



Copper SFP

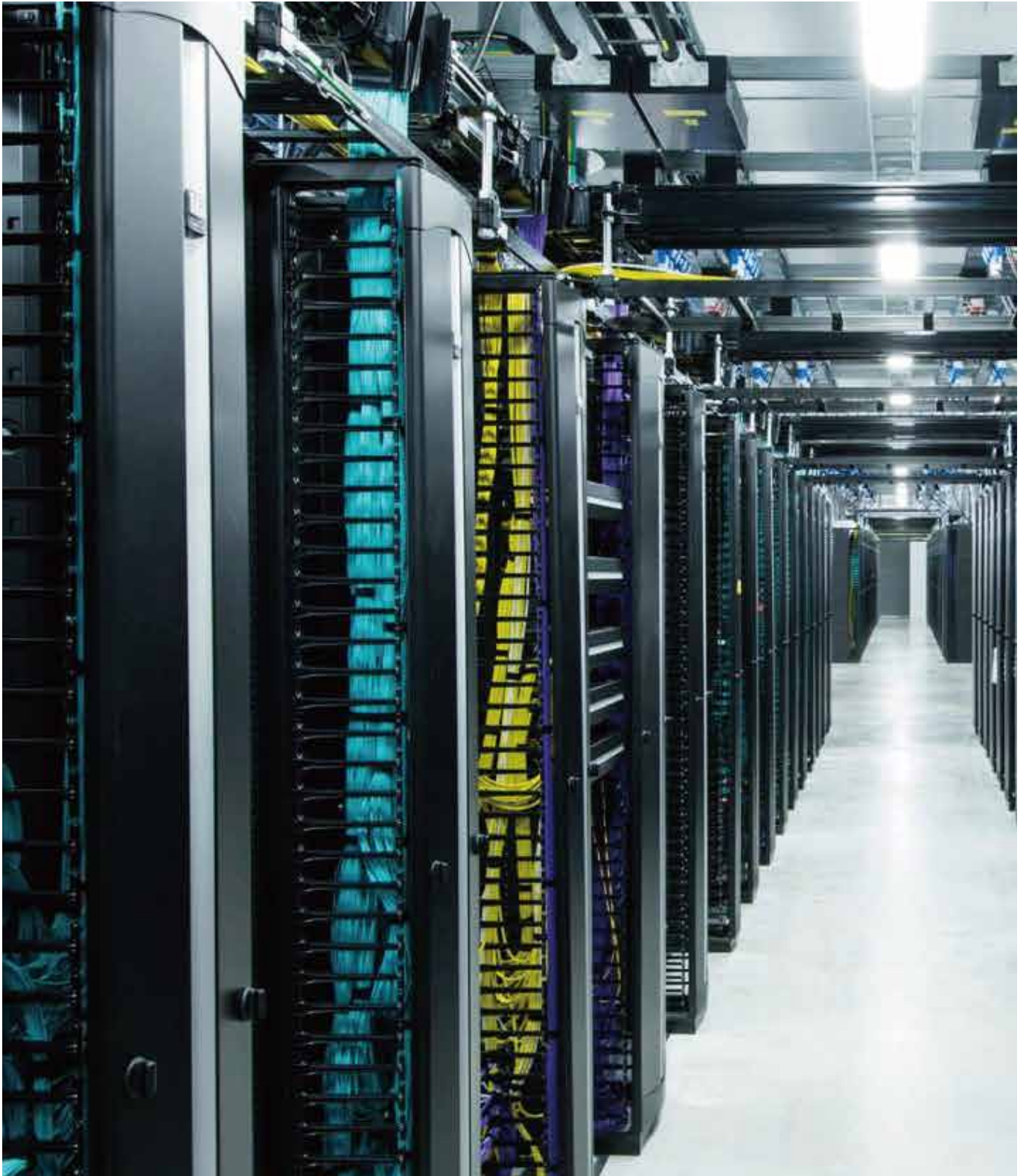
- Hot-pluggable SFP package
- Compliant with SFP MSA
- Compact RJ-45 connector assembly
- Fully metallic enclosure for low EMI
- Interface for management and diagnostic monitor
- Single +3.3V power supply
- Operating temperature range:0~70°C or -40~+85°C optional
- RoHS compliant

Part Number	Package	Distance	Data Rate	Connector	Tx_Disable	Rx_LOS
OP3401	SFP	100M	10/100/1000Mb/s	RJ45	YES	YES
OP3401-1	SFP	100M	10/100/1000Mb/s	RJ45	YES	NO
OP3401-2	SFP	100M	10/100/1000Mb/s	RJ45	NO	YES
OP3401-3	SFP	100M	10/100/1000Mb/s	RJ45	NO	NO
OP3401G	SFP	100M	纯1000Mb/s	RJ45	YES	YES
OP3401G-1	SFP	100M	纯1000Mb/s	RJ45	YES	NO
OP3401G-2	SFP	100M	纯1000Mb/s	RJ45	NO	YES
OP3401G-3	SFP	100M	纯1000Mb/s	RJ45	NO	NO
OP3901	SFP+	30M	10Gb/s	RJ45	YES	YES





# AOC DAC SOLUTIONS



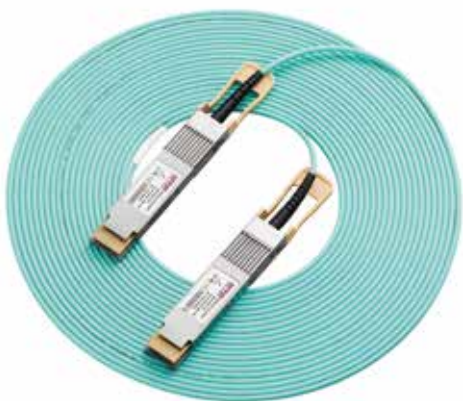
# AOC

## SOLUTIONS

## Application

Data center  
HPC interconnection  
InfiniBand

## Features



- Full-duplex active optical cable
- Hot pluggable form factor
- High reliable 850nm VCSEL technology
- Built-in digital diagnostic functions
- Single +3.3V power supply
- Low power consumption
- Operating temperature range:0~70°C
- RoHS 6 compliant

Part Number	Package	Data Rate	Distance	Tx	Rx	Cable
OPDJTx-AOC	QSFP-DD	400Gb/s	0.5~100M	VCSEL	PIN	MM
OPQHTx-AOC	QSFP56	200Gb/s	0.5~100M	VCSEL	PIN	MM
OPQHTx-2-AOC	QSFP56→2*QSFP56	200Gb/s	0.5~100M	VCSEL	PIN	MM
OPQETx-AOC	QSFP28	100Gb/s	0.5~100M	VCSEL	PIN	MM
OPQETx-4-AOC	QSFP28→4*SFP28	100Gb/s	0.5~100M	VCSEL	PIN	MM
OPQCTx-AOC	QSFP+	40Gb/s	0.5~150M	VCSEL	PIN	MM
OPQCTx-4-AOC	QSFP+→4*SFP+	40Gb/s	0.5~150M	VCSEL	PIN	MM
OP30Tx-AOC	SFP28	25Gb/s	0.5~100M	VCSEL	PIN	MM
OP39Tx-AOC	SFP+	10Gb/s	0.5~300M	VCSEL	PIN	MM



# Application

Data center  
Enterprise network  
InfiniBand

# DAC SOLUTIONS

## Features

- Full-duplex direct attach cable
- Hot pluggable form factor
- Single +3.3V power supply
- Low crosstalk
- Low power consumption
- Operating temperature range: 0~70°C
- RoHS compliant



Part Number	Package	Data Rate	Distance	Tx	Rx	Cable
OPDJTx	QSFP-DD	400Gb/s	0.5~3M	/	/	Copper
OPDJTx-8	QSFP-DD→8*SFP56	400Gb/s	0.5~3M	/	/	Copper
OPDHTx	QSFP-DD	200Gb/s	0.5~3M	/	/	Copper
OPDHTx-2	QSFP-DD→2*QSFP28	200Gb/s	0.5~3M	/	/	Copper
OPQHTx	QSFP56	200Gb/s	0.5~3M	/	/	Copper
OPQHTx-2	QSFP56→2*QSFP56	200Gb/s	0.5~3M	/	/	Copper
OPQHTx-4	QSFP56→4*SFP56	200Gb/s	0.5~3M	/	/	Copper
OPQETx	QSFP28	100Gb/s	0.5~5M	/	/	Copper
OPQETx-4	QSFP28→4*SFP28	100Gb/s	0.5~5M	/	/	Copper
OPQCTx	QSFP+	40Gb/s	0.5~7M	/	/	Copper
OPQCTx-4	QSFP+→4*SFP+	40Gb/s	0.5~7M	/	/	Copper
OP30Tx	SFP28	25Gb/s	0.5~5M	/	/	Copper
OP39Tx	SFP+	10Gb/s	0.5~7M	/	/	Copper

## 50GHz ITU Grid DWDM Wavelength

Channel No.	Central Wavelength (nm)	Frequency (THz)	Channel No.	Central Wavelength (nm)	Frequency (THz)
21	1560.61	192.10	41	1544.53	194.10
21.5	1560.20	192.15	41.5	1544.13	194.15
22	1559.79	192.20	42	1543.73	194.20
22.5	1559.39	192.25	42.5	1543.33	194.25
23	1558.98	192.30	43	1542.94	194.30
23.5	1558.58	192.35	43.5	1542.54	194.35
24	1558.17	192.40	44	1542.14	194.40
24.5	1557.77	192.45	44.5	1541.75	194.45
25	1557.36	192.50	45	1541.35	194.50
25.5	1556.96	192.55	45.5	1540.95	194.55
26	1556.55	192.60	46	1540.56	194.60
26.5	1556.15	192.65	46.5	1540.16	194.65
27	1555.75	192.70	47	1539.77	194.70
27.5	1555.34	192.75	47.5	1539.37	194.75
28	1554.94	192.80	48	1538.98	194.80
28.5	1554.54	192.85	48.5	1538.58	194.85
29	1554.13	192.90	49	1538.19	194.90
29.5	1553.73	192.95	49.5	1537.79	194.95
30	1553.33	193.00	50	1537.40	195.00
30.5	1552.93	193.05	50.5	1537.00	195.05
31	1552.52	193.10	51	1536.61	195.10
31.5	1552.12	193.15	51.5	1536.22	195.15
32	1551.72	193.20	52	1535.82	195.20
32.5	1551.32	193.25	52.5	1535.43	195.25
33	1550.92	193.30	53	1535.04	195.30
33.5	1550.52	193.35	53.5	1534.64	195.35
34	1550.12	193.40	54	1534.25	195.40
34.5	1549.72	193.45	54.5	1533.86	195.45
35	1549.32	193.50	55	1533.47	195.50
35.5	1548.91	193.55	55.5	1533.07	195.55
36	1548.51	193.60	56	1532.68	195.60
36.5	1548.11	193.65	56.5	1532.29	195.65
37	1547.72	193.70	57	1531.90	195.70
37.5	1547.32	193.75	57.5	1531.51	195.75
38	1546.92	193.80	58	1531.12	195.80
38.5	1546.52	193.85	58.5	1530.72	195.85
39	1546.12	193.90	59	1530.33	195.90
39.5	1545.72	193.95	59.5	1529.94	195.95
40	1545.32	194.00	60	1529.55	196.00
40.5	1544.92	194.05	60.5	1529.16	196.05



## 100GHz ITU Grid DWDM Wavelength

Channel No.	Central Wavelength (nm)	Frequency (THz)	Channel No.	Central Wavelength (nm)	Frequency (THz)
17	1563.86	191.7	40	1545.32	194.0
18	1563.05	191.8	41	1544.53	194.1
19	1562.23	191.9	42	1543.73	194.2
20	1561.42	192.0	43	1542.94	194.3
21	1560.61	192.1	44	1542.14	194.4
22	1559.79	192.2	45	1541.35	194.5
23	1558.98	192.3	46	1540.56	194.6
24	1558.17	192.4	47	1539.77	194.7
25	1557.36	192.5	48	1538.98	194.8
26	1556.55	192.6	49	1538.19	194.9
27	1555.75	192.7	50	1537.40	195.0
28	1554.94	192.8	51	1536.61	195.1
29	1554.13	192.9	52	1535.82	195.2
30	1553.33	193.0	53	1535.04	195.3
31	1552.52	193.1	54	1534.25	195.4
32	1551.72	193.2	55	1533.47	195.5
33	1550.92	193.3	56	1532.68	195.6
34	1550.12	193.4	57	1531.90	195.7
35	1549.32	193.5	58	1531.12	195.8
36	1548.51	193.6	59	1530.33	195.9
37	1547.72	193.7	60	1529.55	196.0
38	1546.92	193.8	61	1528.77	196.1
39	1546.12	193.9			

## CWDM Bail Color Remarks

Channel No.	Central Wavelength (nm)	Bail Color	Channel No.	Central Wavelength (nm)	Bail Color
27	1270	Light Purple	45	1450	Yellow Orange
29	1290	Sky Blue	47	1470	Gray
31	1310	Yellow Green	49	1490	Violet
33	1330	Yellow Ocher	51	1510	Blue
35	1350	Pink	53	1530	Green
37	1370	Beige	55	1550	Yellow
39	1390	White	57	1570	Orange
41	1410	Silver	59	1590	Red
43	1430	Black	61	1610	Brown

*Explore the Way of Optics*



**OPWAY COMMUNICATION INC.**

TEL: +86- 755 8600 0303

E-mail: [info@opwaytech.com](mailto:info@opwaytech.com)

Website: [www.opwaytech.com](http://www.opwaytech.com)

Headquarters: Building 9th, Phase II of Standard Factory, Qingquan Industrial Zone, Yanjiang, Ziyang, Sichuan

Branch address: 3F, Building 5, Section 2, Baiwangxin High-Tech Industrial Park, 1002 Songbai Road, Nanshan, ShenZhen

Wuhan R&D production base: 4-6F, Building 10, Optical Valley New Power, Donghu New Technology Development zone, Wuhan