

PRODUCT CATALOGUE

产品目录 2026



CONTENTS

目录

Transceiver Product /

1.6T OSFP	01
1.6T AEC	02

800G OSFP	03
800G QSFP-DD800	04
400G/200G DCO	05
400G OSFP	06
400G QSFP112/QSFP-DD	07
200G QSFP56/QSFP-DD	08
100G QSFP28	09
100G CFPX	11
50G QSFP28	12
40G QSFP+	13
25G SFP28	14
10G SFP+	15
10G XFP	18
COMPACT SFP	20
2.5G SFP	21
1.25G SFP	23
155M SFP	25
PON	27
COPPER SFP	29



Cable Product /	ACTIVE OPTICAL CABLE	31
	DIRECT ATTACH CABLE	32

Appendix /	50GHz DWDM WAVELENGTH	33
	100GHz DWDM WAVELENGTH	34
	CWDM BAIL COLOR REMARKS	34

公司介绍

COMPANY PROFILE

四川省光为通信有限公司是一家国有控股、上市公司参股的市属国有重点高科技企业。公司致力于光通信产品的研发、生产和销售，是国家级高新技术企业和工信部认定的专精特新“小巨人”企业。总部位于四川省资阳市智能制造产业园(清泉片区)，旗下有深圳光为和武汉光为两家全资子公司。公司现有员工400余人，聚集了大批业内资深人才，凭借对行业的高度关注和多年的丰富经验，为客户提供全系列的光收发模块产品和解决方案、智算中心/云计算的整体解决方案。光为以先进的技术和优质的服务赢得了全球客户的青睐，光模块年产销量高达八百余万只，为各大运营商提供光通信设备、为各类AI及智算中心提供整体解决方案。产品广泛应用于城域网、局域网、存储网络、无线网络、数据中心以及云计算等领域，客户遍及国内及欧洲、北美、东南亚、非洲、中东、南美等海外区域。

SICHUAN OPWAY COMMUNICATION INC. IS A KEY HIGH-TECH ENTERPRISE WITH STATE-OWNED HOLDING AND LISTED COMPANIES' SHARES. ENTERPRISE DEDICATED TO THE R&D, PRODUCTION AND SALES OF OPTICAL COMMUNICATION PRODUCTS. A BOUTIQUE "SMALL" GIANT" ENTERPRISE RECOGNIZED BY THE MINISTRY OF INDUSTRY AND INFORMATION TECHNOLOGY. ITS HEADQUARTER IS LOCATED IN THE INTELLIGENT MANUFACTURING INDUSTRIAL PARK (QINGQUAN DISTRICT) OF ZIYANG CITY, SICHUAN PROVINCE), WHICH HAS TWO WHOLLY-OWNED SUBSIDIARIES, SHENZHEN OPWAY AND WUHAN OPWAY. THE COMPANY HAS MORE THAN 400 EMPLOYEES AND HAS GATHERED A LARGE NUMBER OF SENIOR TALENTS IN THE INDUSTRY. WITH STRONG FOCUS ON OPTICAL COMMUNICATION INDUSTRY AND YEARS OF RICH EXPERIENCE, OPWAY CAN PROVIDE FULL RANGE OF OPTICAL TRANSCIEVER PRODUCTS AND SOLUTIONS. OPWAY HAS WON HIGH RECOGNITION OF GLOBAL CUSTOMERS WITH ADVANCED TECHNOLOGY AND HIGH-QUALITY SERVICES. THE ANNUAL SALES VOLUME OF MODULES IS AS HIGH AS MORE THAN 8 MILLION. THE PRODUCTS ARE WIDELY USED IN THE MAN, LAN, STORAGE NETWORKS, WIRELESS NETWORKS, DATA CENTER, CLOUD COMPUTING AND OTHER FIELDS, THE CUSTOMERS ARE FROM ALL OVER THE COUNTRY AND OVERSEAS REGIONS SUCH AS EUROPE, NORTH AMERICA, SOUTHEAST ASIA, AFRICA, THE MIDDLE EAST, SOUTH AMERICA ,ETC.



OPWAY

企业精神

企业精神: 务实创新 努力拼搏 永不言败

我们的团队: 团结协作 狼性毕现 召之即来 来之能战 战之能胜

我们的状态: 阳光 快乐 激情 充满正能量

我们的作风: 谦虚 勤奋 专业 感恩 责任

ENTERPRISE SPIRIT

ENTREPRENEURIAL SPIRIT: PRAGMATIC INNOVATION, HARD WORK, NEVER GIVE UP
OUR TEAM: UNITY AND COOPERATION, FULL OF WOLF SPIRIT, COME UPON CALL, COME TO FIGHT, FIGHT TO WIN

OUR STATE: SUNSHINE, JOY, PASSION, FULL OF POSITIVE ENERGY

OUR STYLE: HUMBLE, DILIGENT, PROFESSIONAL, GRATEFUL, AND RESPONSIBLE

OPWAY
communication

COMMUNICATION INC.

Sep

2014

荣获国家高新技术企业证书

Awarded
“National High-tech Enterprise”



02

Aug

2022

2022年8月获得工信部第四批国家
专精特新“小巨人”认定

In August 2022, Shenzhen Opway
was recognized as the fourth batch
of national "Little Giant" by the Ministry of Industry
and Information Technology



01

Dec

2018

荣获“面向5G和大型数据中心高速
光模块工程技术研究中心”称号

Awarded
“High-speed Optical Transceiver
Engineering Research Center for 5G and IDC”

03





Optical Transceiver 光收发模块

1.6T OSFP SOLUTIONS

应用 Application

DATACOM

数据中心



OSFP 1.6T 2xDR4 500M

Features

- 支持OSFP1600封装热插拔
 - 支持1600b/s的速率
 - 最大功耗小于30W
 - 3.3V供电
 - 双MPO-12光接口的连接器
 - 支持DDM功能
 - 满足RoHS
-
- Hot-pluggable OSFP form factor
 - Supports 850Gb/s aggregate bit rate
 - 8x106.25Gbps PAM4 transmitter and PAM4 receiver
 - 8x100G PAM4 retimed 106.25Gb/s PAM4 electrical interface
 - Single 3.3V power supply
 - I2C management interface
 - operating case temperature range: 0~70°C
 - RoHS compliant

Part Number	Data Rate	Package	Distance	Wavelength	Connector	Tx	Rx	Cable
OPON05D-8	1600G	OSFP	500M	1310	Dual MPO(APC)	Siph	PIN	SM



应用 Application

1.6T Ethernet
SWITCH/Router
Data storage and communication industry
Data center, cloud server
InfiniBand NDR/HDR/EDR

1.6T以太网
交换机/路由器
数据存储和工业通信
数据中心, 云服务器
InfiniBand NDR/HDR/EDR

OSFP 1.6T AEC SOLUTIONS

Features

- 产品支持CMIS 5.0和OSFP_MSA
 - 产品满足IEEE802.3ck
 - 支持224G(PAM4)的电口速率
 - 支持I2C接口
 - 支持热插拔
 - 3.3V供电, 最大功耗15W(单端)
 - 传输距离最大可达5m
 - 满足RoHS
-
- Products Compliance with CMIS5.0 ,OSFP_MSA
 - Products Compliance with IEEE802.3ck
 - Support 224G (PAM4) electrical data rates/channel
 - Support I2C two - line string interface, easy to control
 - Support for hot plugging
 - 3.3V power supply & Power Consumption 15W (per End)
 - Maximum Link Length: up to 5m
 - RoHS Compliance



1.6T AEC

Part Number	Data Rate	Package	Distance	Wavelength	Connector	Tx	Rx	Cable
OPONTx	1600G	OSFP	0.5M~5M	NA	NA	NA	NA	Active Electrical Cable

800G OSFP SOLUTIONS

应用 Application

800G以太网/800G Ethernet

超算中心/InfiniBand

数据中心互联/Data Center Interconnect



800G OSFP 2XDR4

Features

- 热插拔OSFP封装
 - 支持850Gb/s聚合速率
 - 8x100G PAM4 发射和接收
 - 8x100G PAM4 (Retimed 106.25Gb/s) 电接口
 - +3.3V单电源供电
 - I2C 管理接口
 - 工作亮温: 0~70°C
 - 符合RoHS标准
- Hot-pluggable OSFP form factor
 - Supports 850Gb/s aggregate bit rate
 - 8x106.25Gbps PAM4 transmitter and PAM4 receiver
 - 8x100G PAM4 retimed 106.25Gb/s PAM4 electrical interface
 - Single 3.3V power supply
 - I2C management interface
 - operating case temperature range: 0~70°C
 - RoHS compliant

Part Number	Data Rate	Package	Distance	Wavelength	Connector	Tx	Rx	Cable
OPOM00H-8	850Gb/s(8x106.25Gb/s)	OSFP	50M (VR8)	850nm	MPO-16(APC)	VCSEL	PIN	MM
OPOM00D-8	850G(2x425Gb/s)	OSFP	50M (2xVR4)	850nm	Dual MPO-12(APC)	VCSEL	PIN	MM
OPOM01H-8	850Gb/s(8x106.25Gb/s)	OSFP	100M (SR8)	850nm	MPO-16(APC)	VCSEL	PIN	MM
OPOM01D-8	850G(2x425Gb/s)	OSFP	100M (2xSR4)	850nm	Dual MPO-12(APC)	VCSEL	PIN	MM
OPOM05H-8	850Gb/s(8x106.25Gb/s)	OSFP	500M (DR8)	1310nm	MPO-16(APC)	EML	PIN	SM
OPOM05D-8	850G(2x425Gb/s)	OSFP	500M (2xDR4)	1310nm	Dual MPO-12(APC)	EML/Siph	PIN	SM
OPOM02H-8	850Gb/s(8x106.25Gb/s)	OSFP	2KM (DR8+)	1310nm	MPO-16(APC)	EML	PIN	SM
OPOM02D-8	850G(2x425Gb/s)	OSFP	2KM (2xDR4+)	1310nm	Dual MPO-12(APC)	EML/Siph	PIN	SM
OPOM02DL	850G(2x425Gb/s)	OSFP	2KM (2xFR4)	CWDM4	Dual Duplex LC	EML	PIN	SM

注:800G OSFP分Finned Top和Flat Top两种封装外壳,默认为Finned Top封装,如有其他需求,请咨询我们销售人员。

Note: 800G OSFP can be packaged in Finned Top and Flat Top. The default package is Finned Top. If you have other needs, please contact our sales staff.



应用 Application

800G以太网/数据中心/企业网

800G Ethernet/Data Center/Enterprise Networking

800G QSFP-DD800 SOLUTIONS

Features

- 热插拔QSFP-DD800封装
 - 支持850Gb/s聚合速率
 - 8x100G PAM4 发射和接收
 - 8x100G PAM4 (Retimed 106.25Gb/s) 电接口
 - +3.3V单电源供电
 - I2C 管理接口
 - 工作壳温: 0~70°C
 - 符合RoHS标准
-
- Hot-pluggable QSFP-DD800 form factor
 - Supports 850Gb/s aggregate bit rate
 - 8x106.25Gbps PAM4 transmitter and PAM4 receiver
 - 8x100G PAM4 retimed 106.25Gb/s PAM4 electrical interface
 - Single 3.3V power supply
 - I2C management interface
 - operating case temperature range: 0~70°C
 - RoHS compliant



800G QSFP-DD DR8

Part Number	Data Rate	Package	Distance	Wavelength	Connector	Tx	Rx	Cable
OPDM05H-8	850Gb/s(8x106.25Gb/s)	QSFP-DD800	500M (DR8)	1310nm	MPO-16(APC)	EML	PIN	SM
OPDM05D-8	850G(2x425Gb/s)	QSFP-DD800	500M (2xDR4)	1310nm	DualMPO-12(APC)	EML	PIN	SM
OPDM02H-8	850Gb/s(8x106.25Gb/s)	QSFP-DD800	2KM (DR8+)	1310nm	MPO-16(APC)	EML	PIN	SM
OPDM02D-8	850G(2x425Gb/s)	QSFP-DD800	2KM (2xDR4+)	1310nm	DualMPO-12(APC)	EML	PIN	SM
OPDM02	850G(2x425Gb/s)	QSFP-DD800	2KM (2xFR4)	CWDM4	DualDuplexLC	EML	PIN	SM

400G/200G DCO SOLUTIONS

应用 Application

400G以太网/数据中心/云网络
 400GBASE Ethernet/Data center/cloud network
 数据中心互联/城域网/长距传输
 DCI/Metro/Long-haul transport

Features



400G QSFP-DD ZR

- 符合CFP2 MSA或QSFP-DD MSA
- CFP2 DCO主机接口支持多速率以太网或OTN
- QSFP-DD DCO支持OIF 400ZR、OpenZR+ MSA
- 线路接口支持16QAM、QPSK调制模式
- 通过光放大器和色散补偿实现长距离传输
- 支持数字诊断功能
- 符合RoHS标准

- CFP2 MSA compliant or QSFP-DD MSA compliant
- Host interface support Multi-rate Ethernet or OTN for CFP2
- Compliant to OIF 400ZR、OpenZR+ MSA for QSFP-DD
- Line interface support 16QAM, QPSK Modulation modes
- Long-haul transmission with optical amplifiers& Dispersion compensation
- Digital diagnostic monitoring support
- RoHS compliant

400G QSFP-DD DCO

Part Number	Data Rate	Package	Standard	Channel frequency	Channel spacing	Distance
OPDJ120-DCO	400G	QSFP-DD	400ZR	191.3-196.1THz	100&75GHz	80~120KM
OPDJ600-DCO	400/300/200/100G	QSFP-DD	Open ZR+	191.3-196.1THz	Flexible	>600KM

400/200G CFP2 DCO

Part Number	Data Rate	Package	Host interface	Line interface	Distance
OPC2J500-DCO	400G/200G	CFP2	OTUC4/OTUC2/OTU4/400GE/100GE	400G 16QAM/200G QPSK	500KM(400G)/2000KM(200G)
OPC2H1000-DCO	200/100G	CFP2	OTUC2/OTU4/100GE	200G 16QAM/100G QPSK	1000KM(200G)/2000KM(100G)



应用 Application

400G OSFP SOLUTIONS

400G以太网/400G Ethernet

超算中心/InfiniBand

数据中心互联/Data Center Interconnect

Features

- 热插拔OSFP封装
- 支持425Gb/s聚合速率
- 4X100G PAM4 发射和接收
- 4x100G PAM4 (Retimed 106.25Gb/s) 电接口
- +3.3V单电源供电
- I2C 管理接口
- 工作壳温: 0~70°C
- 符合RoHS标准



400G OSFP DR4

- Hot-pluggable OSFP form factor
- Supports 425Gb/s aggregate bit rate
- 4x106.25Gbps PAM4 transmitter and PAM4 receiver
- 4x100G PAM4 retimed 106.25Gb/s PAM4 electrical interface
- Single 3.3V power supply
- I2C management interface
- Operating case temperature range: 0~70°C
- RoHS compliant

Part Number	Data Rate	Package	Distance	Wavelength	Connector	Tx	Rx	Cable
OPOJ00-4-R	425Gb/s(4x106.25Gb/s)	OSFP-RHS	50M (VR4)	850nm	MPO-12(APC)	VCSEL	PIN	MM
OPOJ01-4-R	425Gb/s(4x106.25Gb/s)	OSFP-RHS	100M (SR4)	850nm	MPO-12(APC)	VCSEL	PIN	MM
OPOJ05-4	425Gb/s(4x106.25Gb/s)	OSFP-RHS	500M (DR4)	1310nm	MPO-12(APC)	EML	PIN	SM
OPOJ02	425Gb/s(4x106.25Gb/s)	OSFP-RHS	2KM (FR4)	CWDM4	Duplex LC	EML	PIN	SM

注: 400G OSFP分OSFP-RHS和Finned Top两种封装外壳, 默认为OSFP-RHS封装, 如有其他需求, 请咨询我们销售人员。

Note: 400G OSFP is divided into two kinds of package housing: OSFP-RHS and Finned Top. The default package is OSFP-RHS. If you have other needs, please contact our sales staff.

400G QSFP112/QSFP-DD SOLUTIONS

应用 Application

400G以太网/数据中心/云网络

400GBASE Ethernet/Data Center/Cloud network



400G QSFP112 DR4

Features

- 热插拔QSFP112或QSFP-DD封装
 - 符合QSFP112 MSA或QSFP-DD MSA
 - 符合IEEE 802.3db 或IEEE 802.3bs协议标准
 - 最高速率可达425Gb/s
 - +3.3V单电源供电
 - 工作壳温: 0~70°C
 - 内置数字诊断功能
 - 符合RoHS标准
- Hot-pluggable QSFP112 or QSFP-DD package
 - Compliant with QSFP112 or QSFP-DD MSA
 - Complies with IEEE 802.3db or IEEE 802.3bs protocol standards
 - Supports 425Gb/s data rate
 - Single +3.3V power supply
 - Operating temperature range:0~70°C
 - Built-in digital diagnostic functions
 - RoHS compliant

Part Number	Data Rate	Package	Distance	Wavelength	Connector	Tx	Rx	Cable
OPQJ00-4	425Gb/s(4x106.25Gb/s)	QSFP112	50M (VR4)	850nm	MPO-12(APC)	VCSEL	PIN	MM
OPQJ01-4	425Gb/s(4x106.25Gb/s)	QSFP112	100M (SR4)	850nm	MPO-12(APC)	VCSEL	PIN	MM
OPQJ05-4	425Gb/s(4x106.25Gb/s)	QSFP112	QSFP112	1310nm	MPO-12(APC)	EML/Siph	PIN	SM
OPDJ01-8	425Gb/s(8x53.12Gb/s)	QSFP-DD	100M (SR8)	850nm	MPO-16(APC)	VCSEL	PIN	MM
OPDJ05-4	425Gb/s(4x106.25Gb/s)	QSFP-DD	500M (DR4)	1310nm	MPO-12(APC)	EML/Siph	PIN	SM
OPDJ02-4	425Gb/s(4x106.25Gb/s)	QSFP-DD	2KM (DR4+)	1310nm	MPO-12(APC)	EML/Siph	PIN	SM
OPDJ02	425Gb/s(4x106.25Gb/s)	QSFP-DD	2KM (FR4)	CWDM	Duplex LC	EML	PIN	SM
OPDJ10E	425Gb/s(8x53.12Gb/s)	QSFP-DD	10KM (LR8)	LWDM	Duplex LC	EML	PIN	SM
OPDJ10	425Gb/s(4x106.25Gb/s)	QSFP-DD	10KM (LR4)	CWDM	Duplex LC	EML	PIN	SM
OPDJ40E	425Gb/s(8x53.12Gb/s)	QSFP-DD	40KM (ER8)	LWDM	Duplex LC	EML	APD	SM
OPDJ40	425Gb/s(4x106.25Gb/s)	QSFP-DD	40KM (ER4)	LWDM	Duplex LC	EML	APD	SM



应用 Application

200G以太网/数据中心/云网络
 5G中传和回传/超算中心
 200GBASE Ethernet/Data center/cloud network
 5G midhaul and backhaul/Supercomputer center(InfiniBand)

200G QSFP56/QSFP-DD SOLUTIONS

Features

- 热插拔QSFP56或QSFP-DD封装
 - 符合QSFP56 MSA或QSFP-DD MSA
 - 最高速率可达212.5Gb/s
 - 最远传输距离可达40km
 - +3.3V单电源供电
 - 工作壳温: 0~70°C
 - 内置数字诊断功能
 - 符合RoHS标准
- Hot-pluggable QSFP56 or QSFP-DD package
 - Compliant with QSFP56 or QSFP-DD MSA
 - Supports 212.5Gb/s data rate
 - Maximum link up to 40km
 - Single +3.3V power supply
 - Operating temperature range:0~70°C
 - Built-in digital diagnostic functions
 - RoHS compliant



200G QSFP56

Part Number	Data Rate	Package	Distance	Wavelength	Connector	Tx	Rx	Cable
OPQH01-S	212.5Gb/s(4x53.12Gb/s)	QSFP56	100M (SR4)	850nm	MPO-12	VCSEL	PIN	MM
OPQH01	212.5Gb/s(4x53.12Gb/s)	QSFP56	100M (SR4)	850nm	MPO-12	VCSEL	PIN	MM
OPQH02	212.5Gb/s(4x53.12Gb/s)	QSFP56	2KM (FR4)	CWDM	Dual LC	EML	PIN	SM
OPQH10	212.5Gb/s(4x53.12Gb/s)	QSFP-DD	10KM (LR4)	LWDM	Dual LC	EML	PIN	SM
OPQH40	212.5Gb/s(4x53.12Gb/s)	QSFP-DD	40KM (ER4)	LWDM	Dual LC	EML	APD	SM

注: OPQH01-S, 采用DSP方案; OPQH01, 采用CDR方案
 Note: OPQH01-S, using DSP scheme; OPQH01, using CDR scheme

100G QSFP28 SOLUTIONS

应用 Application

100G数据中心内部网络/数据中心互联/城域网等等
 100G Data center internal network/
 Data center interconnection/MAN



100G QSFP28

Features

- 热插拔QSFP28封装
- 符合QSFP28 MSA
- 四通道设计, 单通道25.78Gb/s或27.95Gb/s
- 最远传输距离可达80Km
- +3.3V单电源供电
- 工作温度:0~+70°C
- 内置数字诊断功能
- 符合RoHS标准

- Hot-pluggable QSFP28 package
- Compliant with QSFP28 MSA
- Four channels design, supports 25.78Gb/s data rate or 27.95Gb/s data rate single channel
- Maximum link up to 80km
- Single +3.3V power supply
- Operating temperature range:0~70°C
- Built-in digital diagnostic functions
- RoHS compliant

Part Number	Data Rate	Package	Distance	Wavelength	Connector	Tx	Rx	Cable
OPQE01	103Gb/s	QSFP28	100M	850nm	MPO-12	VCSEL	PIN	MM
OPHE01-8590	100GbE	QSFP28	100M	850/910nm	Dual LC	VCSEL	PIN	MM
OPQE02	103Gb/s	QSFP28	2KM	CWDM	Dual LC	DFB	PIN	SM
OPQE02-M	103Gb/s	QSFP28	2KM/150M	CWDM	Dual LC	DFB	PIN	SM/MM
OPQE02-4	103Gb/s	QSFP28	2KM	1310nm	MPO-12	DFB	PIN	SM
OPQE10	103/112Gb/s	QSFP28	10KM	LWDM	Dual LC	DML	PIN	SM
OPQE10-S	103Gb/s	QSFP28	10KM	LWDM	Dual LC	DML	PIN	SM
OPQE10-RX	103Gb/s	QSFP28	10KM	/	Single LC	/	PIN	SM
OPQE30	103/112Gb/s	QSFP28	30KM	LWDM	Dual LC	DML	PIN	SM
OPQE40	103/112Gb/s	QSFP28	30KM/40KM (FEC)	LWDM	Dual LC	DML	APD	SM
OPQE40-4WDM	103Gb/s	QSFP28	40KM(FEC)	LWDM	Dual LC	DML	APD	SM
OPQE40-E	103/112Gb/s	QSFP28	40KM	LWDM	Dual LC	EML	APD	SM
OPQE40-RX	103/112Gb/s	QSFP28	40KM	/	Single LC	/	APD	SM
OPQE80	103Gb/s	QSFP28	80KM (FEC)	LWDM	Dual LC	EML	SOA+PIN	SM
OPQE0A	103Gb/s	QSFP28	100km(FEC)	LWDM	Dual LC	EML	SOA+PIN	SM



应用 Application

100G QSFP28 Single Lambda SOLUTIONS

100G以太网

电信传输网

100GBASE Ethernet

Telecommunication transmission network

Features

- 热插拔QSFP28封装
 - 符合100G Lambda MSA
 - 单通道设计, 单通道速率106.25Gb/s
 - 最远传输距离可达40Km
 - +3.3V单电源供电
 - 工作温度:0~+70°C
 - 内置数字诊断功能
 - 符合RoHS标准
- Hot-pluggable QSFP28
 - Compliant with 100G Lambda MSA
 - Single channel design, supports 106.25Gb/s data rate
 - Maximum link up to 40km
 - Single +3.3V power supply
 - Operating temperature range:0~70°C
 - Built-in digital diagnostic functions
 - RoHS compliant



100G QSFP28 Single Lambda

Part Number	Data Rate	Package	Distance	Wavelength	Connector	Tx	Rx	Cable
OPQE05-SW	103G	QSFP28	500M	1311nm	Dual LC	EML	PIN	SM
OPQE02-SW	103G	QSFP28	2KM	1311nm	Dual LC	EML	PIN	SM
OPQE10-SW	103G	QSFP28	10KM	1311nm	Dual LC	EML	PIN	SM
OPQE30-SW	103G	QSFP28	30KM	1310nm	Dual LC	EML	APD	SM
OPQE40-SW	103G	QSFP28	40KM	1310nm	Dual LC	EML	APD	SM
OPHE20-2931	103G	QSFP28	20KM	1290nm	Single LC	EML	PIN	SM
OPHE20-3129	103G	QSFP28	20KM	1310nm	Single LC	EML	PIN	SM
OPHE20-2733	103G	QSFP28	20KM	1271/1331nm	Single LC	EML	PIN	SM
OPHE20-3327	103G	QSFP28	20KM	1331/1271nm	Single LC	EML	PIN	SM
OPHE30-0409	103G	QSFP28	30KM	1304/1309nm	Single LC	EML	APD	SM
OPHE30-0904	103G	QSFP28	30KM	1309/1304nm	Single LC	EML	APD	SM
OPHE40-0409	103G	QSFP28	40KM	1304/1309nm	Single LC	EML	APD	SM
OPHE40-0904	103G	QSFP28	40KM	1309/1304nmL-	Single LC	EML	APD	SM
OPHE80-L23	103G	QSFP28	80KM	WDW4	Single LC	EML	SOA+PIN	SM
OPHE80-L32	103G	QSFP28	80KM	LWDM4	Single LC	EML	SOA+PIN	SM

100G CFPx SOLUTIONS

应用 Application

100G以太网/OTU4

100GBASE Ethernet/OTU4



100G CFPx

Features

- 热插拔CFP/CFP2/CFP4封装
 - 符合CFP/CFP2/CFP4 MSA
 - 四通道设计, 单通道25.78Gb/s或27.95Gb/s
 - 最远传输距离可达80Km
 - +3.3V单电源供电
 - 工作温度:0~+70°C
 - 内置数字诊断功能
 - 符合RoHS标准
-
- Hot-pluggable CFP/CFP2/CFP4 package
 - Compliant with CFP/CFP2/CFP4 MSA
 - Four channels design, supports 25.78Gb/s data rate or 27.95Gb/s data rate single channel
 - Maximum link up to 80km
 - Single +3.3V power supply
 - Operating temperature range:0~70°C
 - Built-in digital diagnostic functions
 - RoHS compliant

Part Number	Data Rate	Package	Distance	Wavelength	Connector	Tx	Rx	Cable
OPC2E10	112Gb/s	CFP2	10KM	LWDM	Dual LC	DML	PIN	SM
OPC2E10-RX	112Gb/s	CFP2	10KM	/	Single LC	/	PIN	SM
OPC2E40	112Gb/s	CFP2	40KM	LWDM	Dual LC	EML	SOA+PIN	SM
OPC2E80	103Gb/s	CFP2	80KM	LWDM	Dual LC	EML	SOA+PIN	SM
OPCFE10	112Gb/s	CFP	10KM	LWDM	Dual LC	EML	PIN	SM
OPCFE40	112Gb/s	CFP	40KM	LWDM	Dual LC	EML	SOA+PIN	SM



应用 Application

50G QSFP28 SOLUTIONS

5G中传和回传

5G midhaul and backhaul

Features

- 热插拔QSFP28封装
 - 符合QSFP28 MSA
 - 单通道设计, 单通道速率53.125Gb/s
 - 最远传输距离可达40Km
 - +3.3V单电源供电
 - 工作温度:0~+70°C
 - 内置数字诊断功能
 - 符合RoHS标准
-
- Hot-pluggable QSFP28 package
 - Compliant with QSFP28 MSA
 - Single channel design, supports 53.125Gb/s data rate
 - Maximum link up to 40km
 - Single +3.3V power supply
 - Operating temperature range:0~70°C
 - Built-in digital diagnostic functions
 - RoHS compliant



50G QSFP28

Part Number	Data Rate	Package	Distance	Wavelength	Connector	Tx	Rx	Cable
OPQG10	50Gb/s	QSFP28	10KM	1310nm	Dual LC	DML	PIN	SM
OPQG40	50Gb/s	QSFP28	40KM	1310nm	Dual LC	EML	APD	SM
OPHG10-2733	50Gb/s	QSFP28	10KM	TX1270/RX1330	Single LC	DML	PIN	SM
OPHG10-3327	50Gb/s	QSFP28	10KM	TX1270/RX1330	Single LC	DML	PIN	SM
OPHG40-2930	50Gb/s	QSFP28	40KM	TX1295/RX1309	Single LC	EML	APD	SM
OPHG40-3029	50Gb/s	QSFP28	40KM	TX1309/RX1295	Single LC	EML	APD	SM

40G QSFP+ SOLUTIONS



40G QSFP+

应用 Application

数据中心/园区网络/城域网络

Data center/campus network/MAN

Features

- 热插拔QSFP+封装
 - 符合QSFP+ MSA
 - 四通道设计, 单通道最高速率11.2Gb/s
 - 最长传输距离可达40Km
 - +3.3V单电源供电
 - 工作温度:0~+70°C
 - 内置数字诊断功能
 - 符合RoHS标准
-
- Hot-pluggable QSFP+ package
 - Compliant with QSFP+ MSA
 - Four channels design, supports 11.2Gb/s data rate single channel
 - Maximum link up to 40km
 - Single +3.3V power supply
 - Operating temperature range:0~70°C
 - Built-in digital diagnostic functions
 - RoHS compliant

Part Number	Data Rate	Package	Distance	Wavelength	Connector	Tx	Rx	Cable
OPQC01	40Gb/s	QSFP+	100M	850nm	MPO-12	VCSEL	PIN	MM
OPQC03	40Gb/s	QSFP+	300M	850nm	MPO-12	VCSEL	PIN	MM
OPQC02	40Gb/s	QSFP+	2KM	CWDM	Dual LC	DFB	PIN	SM
OPQC02-4	40Gb/s	QSFP+	2KM	1310nm	MPO-12	DFB	PIN	SM
OPQC02-M	40Gb/s	QSFP+	2KM/100M	CWDM	Dual LC	DFB	PIN	SM/MM
OPQC10	40Gb/s	QSFP+	10KM	CWDM	Dual LC	DFB	PIN	SM
OPQC10-4	40Gb/s	QSFP+	10KM	1310nm	MPO-12	DFB	PIN	SM
OPQC40	40Gb/s	QSFP+	40KM	CWDM	Dual LC	DFB	APD	SM



应用 Application

25G SFP28 SOLUTIONS

数据中心/25G以太网, 5G前传/光纤通道

Data center/25GBASE Ethernet, 5G fronthaul/ Fiber channel

Features

- 热插拔SFP28封装
- 符合SFP28 MSA
- 最高速率25.78Gb/s
- 最远传输距离可达80Km
- +3.3V单电源供电
- 工作温度:0~+70°C、-40~+85°C
- 内置数字诊断功能
- 符合RoHS标准
- Hot-pluggable SFP28 package
- Compliant with SFP28 MSA
- Supports 25.78Gb/s data rate
- Maximum link up to 80km
- Single +3.3V power supply
- Operating temperature range:0~70°C or -40~+85°C optional
- Built-in digital diagnostic functions
- RoHS compliant



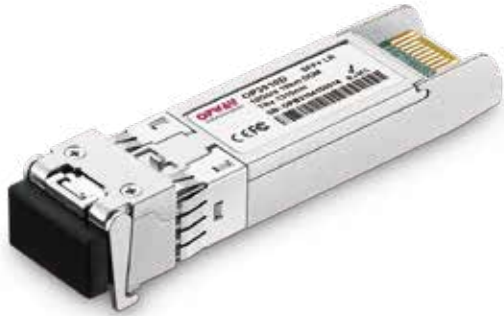
25G SFP28

Part Number	Data Rate	Package	Distance	Wavelength	Connector	Tx	Rx	Cable
OP3001D	25Gb/s	SFP28	100M	850nm	Dual LC	VCSEL	PIN	MM
OP3002D	25Gb/s	SFP28	2KM	1310nm	Dual LC	DFB	PIN	SM
OP3010D	25Gb/s	SFP28	10KM	1310nm	Dual LC	DFB	PIN	SM
OP3030D	25Gb/s	SFP28	30KM	1310nm	Dual LC	DFB	APD	SM
OP3040D	25Gb/s	SFP28	40KM	1310nm	Dual LC	EML	APD	SM
OP3080D	25Gb/s	SFP28	80KM	1310nm	Dual LC	EML	SOA+PIN	SM
OP5010D-2733	25Gb/s	SFP28	10KM	TX1270/RX1330	Single LC	DFB	PIN	SM
OP5010D-3327	25Gb/s	SFP28	10KM	TX1330/RX1270	Single LC	DFB	PIN	SM
OP5040D-2731	25Gb/s	SFP28	40KM	TX1270/RX1310	Single LC	DFB	APD	SM
OP5040D-3127	25Gb/s	SFP28	40KM	TX1310/RX1270	Single LC	DFB	APD	SM
OP3010D-XX	25Gb/s	SFP28	10KM	1270~1370nm	Dual LC	DFB	PIN	SM
OP3010D-XX	25Gb/s	SFP28	10KM	1470~1570nm	Dual LC	EML	PIN	SM
OP3010D-DXX	25Gb/s	SFP28	10KM	DWDM ITU	Dual LC	EML	PIN	SM
OP3010D-TUN48	25Gb/s	SFP28	10KM	Tunable DWDM (48λ)	Dual LC	EML	PIN	SM
OP3010D-LXXX	25Gb/s	SFP28	10KM	LWDM	Dual LC	DFB	PIN	SM
OP3040D-LXXX	25Gb/s	SFP28	40KM	LWDM	Dual LC	EML	APD	SM
OP3010D-MXXX	25Gb/s	SFP28	10KM	MWDM	Dual LC	DFB	PIN	SM

10G SFP+ SOLUTIONS

应用 Application

SONET OC-192/SDH STM-64
10GBASE Ethernet



10G SFP+

Features

- 热插拔SFP+封装
 - 符合SFP+ MSA
 - +3.3V单电源供电
 - 支持多速率协议 (Up to 11.3Gb/s)
 - 最远传输距离可达100Km
 - 双LC光接口
 - 工作温度范围:0~+70°C、-40~+85°C
 - 内置数字诊断功能
 - 符合 RoHS 标准
-
- Hot-pluggable SFP+ package
 - Compliant with SFP+ MSA
 - Single +3.3V power supply
 - Support multi protocol up to 11.3Gb/s
 - Maximum link up to 100km
 - Dual LC connector
 - Operating temperature range:0~70°C or -40~+85°C optional
 - Built-in digital diagnostic functions
 - RoHS compliant

Part Number	Data Rate	Package	Distance	Wavelength	Connector	Tx	Rx	Cable
OP3902D	10Gb/s	SFP+	220M	1310nm	Dual LC	FP	PIN	MM
OP3903D	10Gb/s	SFP+	300M	850nm	Dual LC	VCSEL	PIN	MM
OP3904D	10Gb/s	SFP+	2KM	1310nm	Dual LC	FP	PIN	SM
OP3910D	10Gb/s	SFP+	10KM	1310nm	Dual LC	DFB	PIN	SM
OP3940D-13	10Gb/s	SFP+	40KM	1310nm	Dual LC	DFB	PIN	SM
OP3940D	10Gb/s	SFP+	40KM	1550nm	Dual LC	EML	PIN	SM
OP3980D	10Gb/s	SFP+	80KM	1550nm	Dual LC	EML	APD	SM
OP390AD	10Gb/s	SFP+	100KM	1550nm	Dual LC	EML	APD	SM

10G SFP+ with CDR

OP3910S	10Gb/s	SFP+	10KM	1310nm	Dual LC	DFB	PIN	SM
OP3940S	10Gb/s	SFP+	40KM	1550nm	Dual LC	EML	PIN	SM
OP3980S	10Gb/s	SFP+	80KM	1550nm	Dual LC	EML	APD	SM
OP390AS	10Gb/s	SFP+	100KM	1550nm	Dual LC	EML	APD	SM



应用 Application

SONET OC-192/SDH STM-64
10GBASE Ethernet

10G SFP+ SOLUTIONS

Features

- 热插拔SFP+封装
- 符合SFP+ MSA
- +3.3V单电源供电
- 支持多速率协议 (Up to 11.3Gb/s)
- 1270~1610nm CWDM, ITU DWDM波长可选
- 最远传输距离可达80Km
- 双LC光接口
- 工作温度范围:0~+70°C、-40~+85°C
- 内置数字诊断功能
- 符合 RoHS 标准



10G CWDM&DWDM SFP+

- Hot-pluggable SFP+ package
- Compliant with SFP+ MSA
- Single +3.3V power supply
- Support multi protocol up to 11.3Gb/s
- 1270~1610nm CWDM, ITU DWDM select
- Maximum link up to 80km
- Dual LC connector
- Operating temperature range:0~70°C or -40~+85°C optional
- Built-in digital diagnostic functions
- RoHS compliant

Part Number	Data Rate	Package	Distance	Wavelength	Connector	Tx	Rx	Cable
OP3910D-XX	10Gb/s	SFP+	10KM	1270~1610nm	Dual LC	DFB	PIN	SM
OP3940D-XX	10Gb/s	SFP+	40KM	1470~1610nm	Dual LC	EML	PIN	SM
OP3980D-XX	10Gb/s	SFP+	80KM	1470~1610nm	Dual LC	EML	APD	SM
OP3940D-DXX	10Gb/s	SFP+	40KM	DWDM ITU	Dual LC	EML	PIN	SM
OP3980D-DXX	10Gb/s	SFP+	80KM	DWDM ITU	Dual LC	EML	APD	SM

10G SFP+ SOLUTIONS

应用 Application

SONET OC-192/SDH STM-64
10GBASE Ethernet



10G Bi-Di SFP+

Features

- 热插拔SFP+封装
 - 符合SFP+ MSA
 - +3.3V单电源供电
 - 支持多速率协议 (Up to 11.3Gb/s)
 - 最远传输距离可达80Km
 - 单LC光接口
 - 工作温度范围:0~+70°C、-40~+85°C
 - 内置数字诊断功能
 - 符合 RoHS 标准
- Hot-pluggable SFP+ package
 - Compliant with SFP+ MSA
 - Single +3.3V power supply
 - Support multi protocol up to 11.3Gb/s
 - Maximum link up to 80km
 - Single LC connector
 - Operating temperature range:0~70°C or -40~+85°C optional
 - Built-in digital diagnostic functions
 - RoHS compliant

Part Number	Data Rate	Package	Distance	Wavelength	Connector	Tx	Rx	Cable
OP5910D-2733	10Gb/s	SFP+	10KM	TX1270/RX1330	Single LC	DFB	PIN	SM
OP5910D-3327	10Gb/s	SFP+	10KM	TX1330/RX1270	Single LC	DFB	PIN	SM
OP5920D-2733	10Gb/s	SFP+	20KM	TX1270/RX1330	Single LC	DFB	PIN	SM
OP5920D-3327	10Gb/s	SFP+	20KM	TX1330/RX1270	Single LC	DFB	PIN	SM
OP5940D-2733	10Gb/s	SFP+	40KM	TX1270/RX1330	Single LC	DFB	PIN	SM
OP5940D-3327	10Gb/s	SFP+	40KM	TX1330/RX1270	Single LC	DFB	PIN	SM
OP5960D-2733	10Gb/s	SFP+	60KM	TX1270/RX1330	Single LC	DFB	APD	SM
OP5960D-3327	10Gb/s	SFP+	60KM	TX1330/RX1270	Single LC	DFB	APD	SM
OP5980S-45	10Gb/s	SFP+	80KM	TX1490/RX1550	Single LC	EML	APD	SM
OP5980S-54	10Gb/s	SFP+	80KM	TX1550/RX1490	Single LC	EML	APD	SM

应用 Application

SONET OC-192/SDH STM-64
10GBASE Ethernet

10G XFP SOLUTIONS

Features

- 热插拔XFP封装
- 符合XFP MSA
- 支持多速率协议 (9.9Gb/s ~ 11.3Gb/s)
- 最远传输距离可达80Km
- 工作温度范围:0~+70°C、-40~+85°C
- 内置数字诊断功能
- 符合 RoHS 标准



10G XFP

- Hot-pluggable XFP package
- Compliant with XFP MSA
- Support multi protocol from 9.9Gb/s ~ 11.3Gb/s
- Maximum link up to 80km
- Operating temperature range:0~70°C or -40~+85°C optional
- Built-in digital diagnostic functions
- RoHS compliant

Part Number	Data Rate	Package	Distance	Wavelength	Connector	Tx	Rx	Cable
OP8903	10Gb/s	XFP	300M	850nm	Dual LC	VCSEL	PIN	MM
OP8902	10Gb/s	XFP	220M	1310nm	Dual LC	FP	PIN	MM
OP8904	10Gb/s	XFP	2KM	1310nm	Dual LC	FP	PIN	SM
OP8910	10Gb/s	XFP	10KM	1310nm	Dual LC	DFB	PIN	SM
OP8940-13	10Gb/s	XFP	40KM	1310nm	Dual LC	DFB	PIN	SM
OP8940	10Gb/s	XFP	40KM	1550nm	Dual LC	EML	PIN	SM
OP8980	10Gb/s	XFP	80KM	1550nm	Dual LC	EML	APD	SM

10G Bi-Di XFP

OPP910-2733	10Gb/s	XFP	10KM	TX1270/RX1330	Single LC	DFB	PIN	SM
OPP910-3327	10Gb/s	XFP	10KM	TX1330/RX1270	Single LC	DFB	PIN	SM
OPP940-2733	10Gb/s	XFP	40KM	TX1270/RX1330	Single LC	DFB	PIN	SM
OPP940-3327	10Gb/s	XFP	40KM	TX1330/RX1270	Single LC	DFB	PIN	SM
OPP960-2733	10Gb/s	XFP	60KM	TX1270/RX1330	Single LC	DFB	APD	SM
OPP960-3327	10Gb/s	XFP	60KM	TX1330/RX1270	Single LC	DFB	APD	SM
OPP980-45	10Gb/s	XFP	80KM	TX1490/RX1550	Single LC	EML	APD	SM
OPP980-54	10Gb/s	XFP	80KM	TX1550/RX1490	Single LC	EML	APD	SM

10G XFP SOLUTIONS



10G CWDM&DWDM XFP

应用 Application

SONET OC-192/SDH STM-64
10GBASE Ethernet

Features

- 热插拔XFP封装
 - 符合XFP MSA
 - 支持多速率协议 (9.9Gb/s ~ 11.3Gb/s)
 - 1270~1610nm CWDM, ITU DWDM波长可选
 - 最长传输距离可达80Km
 - 双LC光接口
 - 工作温度范围:0~+70°C、-40~+85°C
 - 内置数字诊断功能
 - 符合 RoHS 标准
-
- Hot-pluggable XFP package
 - Compliant with XFP MSA
 - Support multi protocol from 9.9Gb/s ~ 11.3Gb/s
 - 1270~1610nm CWDM, ITU DWDM select
 - Maximum link up to 80km
 - Dual LC connector
 - Operating temperature range:0~70°C or -40~+85°C optional
 - Built-in digital diagnostic functions
 - RoHS compliant

Part Number	Data Rate	Package	Distance	Wavelength	Connector	Tx	Rx	Cable
OP8910-XX	10Gb/s	XFP	10KM	1270~1610nm	Dual LC	DFB	PIN	SM
OP8940-XX	10Gb/s	XFP	40KM	1470~1610nm	Dual LC	EML	PIN	SM
OP8980-XX	10Gb/s	XFP	80KM	1470~1610nm	Dual LC	EML	APD	SM
OP8940-DXX	10Gb/s	XFP	40KM	DWDM ITU	Dual LC	EML	PIN	SM
OP8980-DXX	10Gb/s	XFP	80KM	DWDM ITU	Dual LC	EML	APD	SM



应用 Application

点对点光纤到户应用

光纤通道

Point to point FTTH application

Fiber channel

COMPACT SFP SOLUTIONS

Features

- 与普通SFP一样的结构下具有两个通道,每个通道均可独立实现单纤双向传输
 - 符合SFF-8472标准
 - 符合CSFP MSA Option2标准
 - +3.3V单电源供电
 - 工作温度范围:0~+70°C、-40~+85°C
 - 内置数字诊断功能
 - 符合 RoHS 标准
-
- Same compact package with SFP, with Dual LC two channels
Each channel can achieve Bi-Di transmission
 - Compliant with SFF-8472
 - Compliant with CSFP MSA Option2
 - Single +3.3V power supply
 - Operating temperature range:0~70°C or -40~+85°C optional
 - Built-in digital diagnostic functions
 - RoHS compliant



Compact SFP

Part Number	Data Rate	Package	Distance	Wavelength	Connector	Tx	Rx	Cable
OPS220D-35	155Mb/s	CSFP	20KM	TX1310/RX1550	Dual LC	FP	PIN	SM
OPS220D-53	155Mb/s	CSFP	20KM	TX1550/RX1310	Dual LC	FP	PIN	SM
OPS420D-35	1.25Gb/s	CSFP	20KM	TX1310/RX1550	Dual LC	FP	PIN	SM
OPS420D-53	1.25Gb/s	CSFP	20KM	TX1550/RX1310	Dual LC	DFB	PIN	SM
OPS420D-34	1.25Gb/s	CSFP	20KM	TX1310/RX1490	Dual LC	FP	PIN	SM
OPS420D-43	1.25Gb/s	CSFP	20KM	TX1490/RX1310	Dual LC	DFB	PIN	SM
OPS620D-35	2.5Gb/s	CSFP	20KM	TX1310/RX1550	Dual LC	DFB	PIN	SM
OPS620D-53	2.5Gb/s	CSFP	20KM	TX1550/RX1310	Dual LC	DFB	PIN	SM

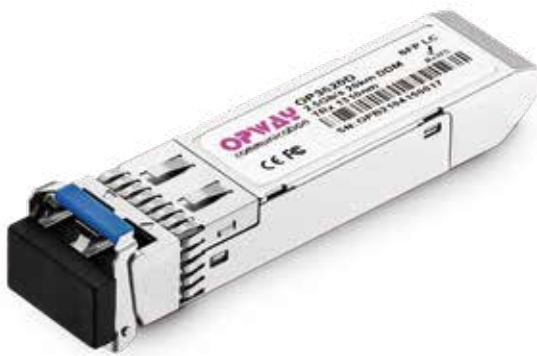
2.5G SFP SOLUTIONS

应用 Application

城域网/接入网

SONET OC-48/SDH STM-16/2xFC

MAN/AN



2.5G SFP

Features

- 热插拔SFP封装
- 符合SFP MSA
- +3.3V单电源供电
- 最远传输距离可达120Km
- 工作温度范围:0~+70°C、-40~+85°C
- 内置数字诊断功能
- 符合 RoHS 标准

- Hot-pluggable SFP package
- Compliant with SFP MSA
- Single +3.3V power supply
- Maximum link up to 120km
- Operating temperature range:0~70°C or -40~+85°C optional
- Built-in digital diagnostic functions
- RoHS compliant





2.5G SFP SOLUTIONS

Part Number	Data Rate	Package	Distance	Wavelength	Connector	Tx	Rx	Cable
OP3603D	2.5Gb/s	SFP	300M	850nm	Dual LC	VCSEL	PIN	MM
OP3602D	2.5Gb/s	SFP	2KM	1310nm	Dual LC	FP	PIN	SM
OP3620D	2.5Gb/s	SFP	20KM	1310nm	Dual LC	DFB	PIN	SM
OP3640D	2.5Gb/s	SFP	40KM	1550nm	Dual LC	DFB	PIN	SM
OP3680D	2.5Gb/s	SFP	80KM	1550nm	Dual LC	DFB	APD	SM
OP360CD	2.5Gb/s	SFP	120KM	1550nm	Dual LC	DFB	APD	SM

2.5G Bi-Di LC SFP

OP5602D-35	2.5Gb/s	SFP	2KM	TX1310/RX1550	Single LC	FP	PIN	SM
OP5602D-53	2.5Gb/s	SFP	2KM	TX1550/RX1310	Single LC	DFB	PIN	SM
OP5620D-35	2.5Gb/s	SFP	20KM	TX1310/RX1550	Single LC	DFB	PIN	SM
OP5620D-53	2.5Gb/s	SFP	20KM	TX1550/RX1310	Single LC	DFB	PIN	SM
OP5640D-45	2.5Gb/s	SFP	40KM	TX1490/RX1550	Single LC	DFB	PIN	SM
OP5640D-54	2.5Gb/s	SFP	40KM	TX1550/RX1490	Single LC	DFB	PIN	SM
OP5680D-45	2.5Gb/s	SFP	80KM	TX1490/RX1550	Single LC	DFB	APD	SM
OP5680D-54	2.5Gb/s	SFP	80KM	TX1550/RX1490	Single LC	DFB	APD	SM
OP560CD-45	2.5Gb/s	SFP	120KM	TX1490/RX1550	Single LC	DFB	APD	SM
OP560CD-54	2.5Gb/s	SFP	120KM	TX1550/RX1490	Single LC	DFB	APD	SM

2.5G CWDM&DWDM SFP

OP3640D-XX	2.5Gb/s	SFP	40KM	1270~1610nm	Dual LC	DFB	PIN	SM
OP3680D-XX	2.5Gb/s	SFP	80KM	1270~1610nm	Dual LC	DFB	APD	SM
OP360CD-XX	2.5Gb/s	SFP	120KM	1270~1610nm	Dual LC	DFB	APD	SM
OP3640D-DXX	2.5Gb/s	SFP	40KM	DWDM ITU	Dual LC	DFB	PIN	SM
OP3680D-DXX	2.5Gb/s	SFP	80KM	DWDM ITU	Dual LC	DFB	APD	SM
OP360CD-DXX	2.5Gb/s	SFP	120KM	DWDM ITU	Dual LC	DFB	APD	SM

1.25G SFP SOLUTIONS

应用 Application

千兆以太网, 城域网/接入网
1000Base Ethernet, MAN/AN

Features

- 热插拔SFP封装
- 符合SFP MSA
- +3.3V单电源供电
- 最远传输距离可达120Km
- 双LC光接口
- 工作温度范围:0~+70°C、-40~+85°C
- 内置数字诊断功能
- 符合 RoHS 标准



1.25G SFP

- Hot-pluggable SFP package
- Compliant with SFP MSA
- Single +3.3V power supply
- Maximum link up to 120km
- Dual LC connector
- Operating temperature range:0~70°C or -40~+85°C optional
- Built-in digital diagnostic functions
- RoHS compliant

Part Number	Data Rate	Package	Distance	Wavelength	Connector	Tx	Rx	Cable
OP3405D	1.25Gb/s	SFP	500M	850nm	Dual LC	VCSEL	PIN	MM
OP3402D	1.25Gb/s	SFP	2KM	1310nm	Dual LC	FP	PIN	MM
OP3420D	1.25Gb/s	SFP	20KM	1310nm	Dual LC	FP	PIN	SM
OP3440D	1.25Gb/s	SFP	40KM	1310nm	Dual LC	DFB	PIN	SM
OP3440D-15	1.25Gb/s	SFP	40KM	1550nm	Dual LC	DFB	PIN	SM
OP3480D	1.25Gb/s	SFP	80KM	1550nm	Dual LC	DFB	PIN	SM
OP340CD	1.25Gb/s	SFP	120KM	1550nm	Dual LC	DFB	APD	SM

1.25G CWDM&DWDM SFP

OP3440D-XX	1.25Gb/s	SFP	40KM	CWDM	Dual LC	DFB	PIN	SM
OP3480D-XX	1.25Gb/s	SFP	80KM	CWDM	Dual LC	DFB	PIN	SM
OP340CD-XX	1.25Gb/s	SFP	120KM	CWDM	Dual LC	DFB	APD	SM
OP3440D-DXX	1.25Gb/s	SFP	40KM	DWDM ITU	Dual LC	DFB	PIN	SM
OP3480D-DXX	1.25Gb/s	SFP	80KM	DWDM ITU	Dual LC	DFB	PIN	SM
OP340CD-DXX	1.25Gb/s	SFP	120KM	DWDM ITU	Dual LC	DFB	APD	SM

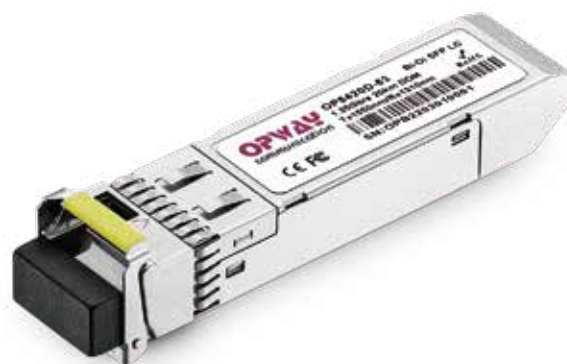


1.25G SFP SOLUTIONS

Features

- 热插拔SFP封装
- 符合SFP MSA
- +3.3V单电源供电
- 最远传输距离可达120Km
- 单LC或SC光接口
- 工作温度范围:0~+70°C、-40~+85°C
- 内置数字诊断功能
- 符合 RoHS 标准

- Hot-pluggable SFP package
- Compliant with SFP MSA
- Single +3.3V power supply
- Maximum link up to 120km
- Single LC/SC connector
- Operating temperature range:0~70°C
- Built-in digital diagnostic functions
- RoHS compliant



1.25G Bi-Di SFP

Part Number	Data Rate	Package	Distance	Wavelength	Connector	Tx	Rx	Cable
OP5405D-35	1.25Gb/s	SFP	500M	TX1310/RX1550	Single LC	FP	PIN	MM
OP5405D-53	1.25Gb/s	SFP	500M	TX1550/RX1310	Single LC	FP	PIN	MM
OP5403D-35	1.25Gb/s	SFP	3KM	TX1310/RX1550	Single LC	FP	PIN	SM
OP5403D-53	1.25Gb/s	SFP	3KM	TX1550/RX1310	Single LC	FP	PIN	SM
OP5420D-35	1.25Gb/s	SFP	20KM	TX1310/RX1550	Single LC	FP	PIN	SM
OP5420D-53	1.25Gb/s	SFP	20KM	TX1550/RX1310	Single LC	DFB	PIN	SM
OP5420D-34	1.25Gb/s	SFP	20KM	TX1310/RX1490	Single LC	FP	PIN	SM
OP5420D-43	1.25Gb/s	SFP	20KM	TX1490/RX1310	Single LC	DFB	PIN	SM
OP5440D-35	1.25Gb/s	SFP	40KM	TX1310/RX1550	Single LC	DFB	PIN	SM
OP5440D-53	1.25Gb/s	SFP	40KM	TX1550/RX1310	Single LC	DFB	PIN	SM
OP5480D-45	1.25Gb/s	SFP	80KM	TX1490/RX1550	Single LC	DFB	PIN	SM
OP5480D-54	1.25Gb/s	SFP	80KM	TX1550/RX1490	Single LC	DFB	PIN	SM
OP540CD-45	1.25Gb/s	SFP	120KM	TX1490/RX1550	Single LC	DFB	APD	SM
OP540CD-54	1.25Gb/s	SFP	120KM	TX1550/RX1490	Single LC	DFB	APD	SM

1.25G Bi-Di SC SFP

OP4403D-35	1.25Gb/s	SFP	3KM	TX1310/RX1550	Single SC	FP	PIN	SM
OP4403D-53	1.25Gb/s	SFP	3KM	TX1550/RX1310	Single SC	FP	PIN	SM
OP4420D-35	1.25Gb/s	SFP	20KM	TX1310/RX1550	Single SC	FP	PIN	SM
OP4420D-53	1.25Gb/s	SFP	20KM	TX1550/RX1310	Single SC	DFB	PIN	SM

155M SFP SOLUTIONS

应用 Application

快速以太网、城域网/接入网

SONET OC-3/SDH-1

Fast Ethernet、MAN/AN



155M SFP

Features

- 热插拔SFP封装
 - 符合SFP MSA
 - +3.3V单电源供电
 - 工作温度范围:0~+70°C、-40~+85°C
 - 内置数字诊断功能
 - 符合 RoHS 标准
-
- Hot-pluggable SFP package
 - Compliant with SFP MSA
 - Single +3.3V power supply
 - Operating temperature range:0~70°C or -40~+85°C optional
 - Built-in digital diagnostic functions
 - RoHS compliant





155M SFP SOLUTIONS

Part Number	Data Rate	Package	Distance	Wavelength	Connector	Tx	Rx	Cable
OPE202	Fl:155Mb/s MI:1.25Gb/s	SFP	2KM	1310nm	Dual LC	FP	PIN	MM
OPE210	Fl:155Mb/s MI:1.25Gb/s	SFP	10KM	1310nm	Dual LC	FP	PIN	SM
OP3202D-85	155Mb/s	SFP	2KM	850nm	Dual LC	VCSEL	PIN	MM
OP3202D	155Mb/s	SFP	2KM	1310nm	Dual LC	FP	PIN	MM
OP3220D	155Mb/s	SFP	20KM	1310nm	Dual LC	FP	PIN	SM
OP3240D	155Mb/s	SFP	40KM	1310nm	Dual LC	FP	PIN	SM
OP3280D	155Mb/s	SFP	80KM	1550nm	Dual LC	DFB	PIN	SM

155M Bi-Di LC SFP

OP5202D-35	155Mb/s	SFP	2KM	TX1310/RX1550	Single LC	FP	PIN	MM
OP5202D-53	155Mb/s	SFP	2KM	TX1550/RX1310	Single LC	FP	PIN	MM
OP5220D-35	155Mb/s	SFP	20KM	TX1310/RX1550	Single LC	FP	PIN	SM
OP5220D-53	155Mb/s	SFP	20KM	TX1550/RX1310	Single LC	FP	PIN	SM
OP5240D-35	155Mb/s	SFP	40KM	TX1310/RX1550	Single LC	FP	PIN	SM
OP5240D-53	155Mb/s	SFP	40KM	TX1550/RX1310	Single LC	DFB	PIN	SM
OP5280D-45	155Mb/s	SFP	80KM	TX1490/RX1550	Single LC	DFB	PIN	SM
OP5280D-54	155Mb/s	SFP	80KM	TX1550/RX1490	Single LC	DFB	PIN	SM

155M Bi-Di SC SFP

OP4220D-35	155Mb/s	SFP	20KM	TX1310/RX1550	Single SC	FP	PIN	SM
OP4220D-53	155Mb/s	SFP	20KM	TX1550/RX1310	Single SC	FP	PIN	SM

155M CWDM&DWDM SFP

OP3280D-XX	155Mb/s	SFP	80KM	CWDM	Dual LC	DFB	PIN	SM
OP3280D-DXX	155Mb/s	SFP	80KM	DWDM ITU	Dual LC	DFB	PIN	SM

PON SOLUTIONS

应用 Application

FTTB/FTTC/FTTH



Features

- EPON/GPON/10G EPON/XGPON/XGSPON/Combo PON可选
- OLT端热插拔SFP或XFP 封装
- ONU端热插拔SFP封装
- 单纤Bi-Di数据链路
- 单SC光接口
- 符合RoHS 标准

- EPON/GPON/10G EPON/XGPON/XGSPON/Combo PON select
- OLT port hot-pluggable SFP or XFP package
- ONU port hot-pluggable SFP package
- Single fiber Bi-Di data link
- Single SC connector
- RoHS compliant



PON SOLUTIONS

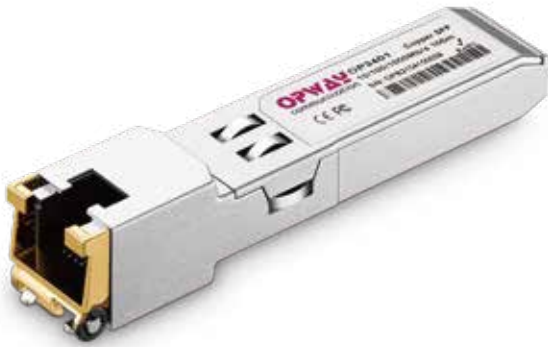
Part Number	Package	Data Rate	Class	Wavelength	Tx	Rx
EPON OLT/ONU Module						
OP44P1-ET	SFP	1.25GbpsT/1.25GbpsR	PX-20+	TX1490/RX1310	DFB	APD
OP44P2-ET	SFP	1.25GbpsT/1.25GbpsR	PX-20++	TX1490/RX1310	DFB	APD
OP44P3-ET	SFP	1.25GbpsT/1.25GbpsR	PX-20+++	TX1490/RX1310	DFB	APD
OP44P1-EU	SFP	1.25GbpsT/1.25GbpsR	PX-20+	TX1310/RX1490	FP	PIN
GPON OLT / ONU Module						
OP46B1-GT	SFP	2.5GbpsT/1.25GbpsR	B+	TX1490/RX1310	DFB	APD
OP46C1-GT	SFP	2.5GbpsT/1.25GbpsR	C+	TX1490/RX1310	DFB	APD
OP46C2-GT	SFP	2.5GbpsT/1.25GbpsR	C++	TX1490/RX1310	DFB	APD
OP44B1-GU	SFP	1.25GbpsT/2.5GbpsR	B+	TX1310/RX1490	DFB	APD
OP44B1-GU-SI	SFP	1.25GbpsT/2.5GbpsR	B+	TX1310/RX1490	DFB	APD
10G EPON OLT / ONU Module						
OP49R1-ET	SFP+	10GbpsT/10GbpsR	PR30	TX1577/RX1270	EML	APD
OP89R1-ET	XFP	10GbpsT/10GbpsR	PR30	TX1577/RX1270	EML	APD
OP49R1-EU	SFP+	10GbpsT/10GbpsR	PR30	TX1270/RX1577	DFB	APD
OP49R2-EU	SFP+	1.25GbpsT/10GbpsR	PRX30	TX1270/RX1577	DFB	APD
XGPON OLT / ONU Module						
OP49N1-GT	SFP+	10GbpsT/2.5GbpsR	N1	TX1577/RX1270	EML	APD
OP49N2-GT	SFP+	10GbpsT/2.5GbpsR	N2a	TX1577/RX1270	EML	APD
OP49N2-GU	SFP+	2.5GbpsT/10GbpsR	N1/N2a	TX1270/RX1577	DFB	APD
XGSPON OLT / ONU Module						
OP49N1-ST	SFP+	10GbpsT/10GbpsR	N1	TX1577/RX1270	EML	APD
OP49N2-ST	SFP+	10GbpsT/10GbpsR	N2	TX1577/RX1270	EML	APD
OP49N2-SU	SFP+	10GbpsT/10GbpsR	N1/N2	TX1270/RX1577	DFB	APD
XGPON Combo						
OP491B-GT	SFP+	XGPON 10GbpsT/2.5GbpsR	N1	TX1577/RX1270	EML	APD
		GPON 2.5GbpsT/1.25GbpsR	B+	TX1490/RX1310	DFB	APD
OP493C-GT	SFP+	XGPON 10GbpsT/2.5GbpsR	N2a	TX1577/RX1270	EML	APD
		GPON 2.5GbpsT/1.25GbpsR	C+	TX1490/RX1310	DFB	APD
XGSPON Combo						
OP491B-ST	SFP+	XGSPON 10GbpsT/10GbpsR	N1	TX1577/RX1270	EML	APD
		GPON 2.5GbpsT/1.25GbpsR	B+	TX1490/RX1310	DFB	APD
OP493C-ST	SFP+	XGSPON 10GbpsT/10GbpsR	N2	TX1577/RX1270	EML	APD
		GPON 2.5GbpsT/1.25GbpsR	C+	TX1490/RX1310	DFB	APD

COPPER SFP SOLUTIONS

应用 Application

交换机/路由器互联

Switch/router to switch/router link



Copper SFP

Features

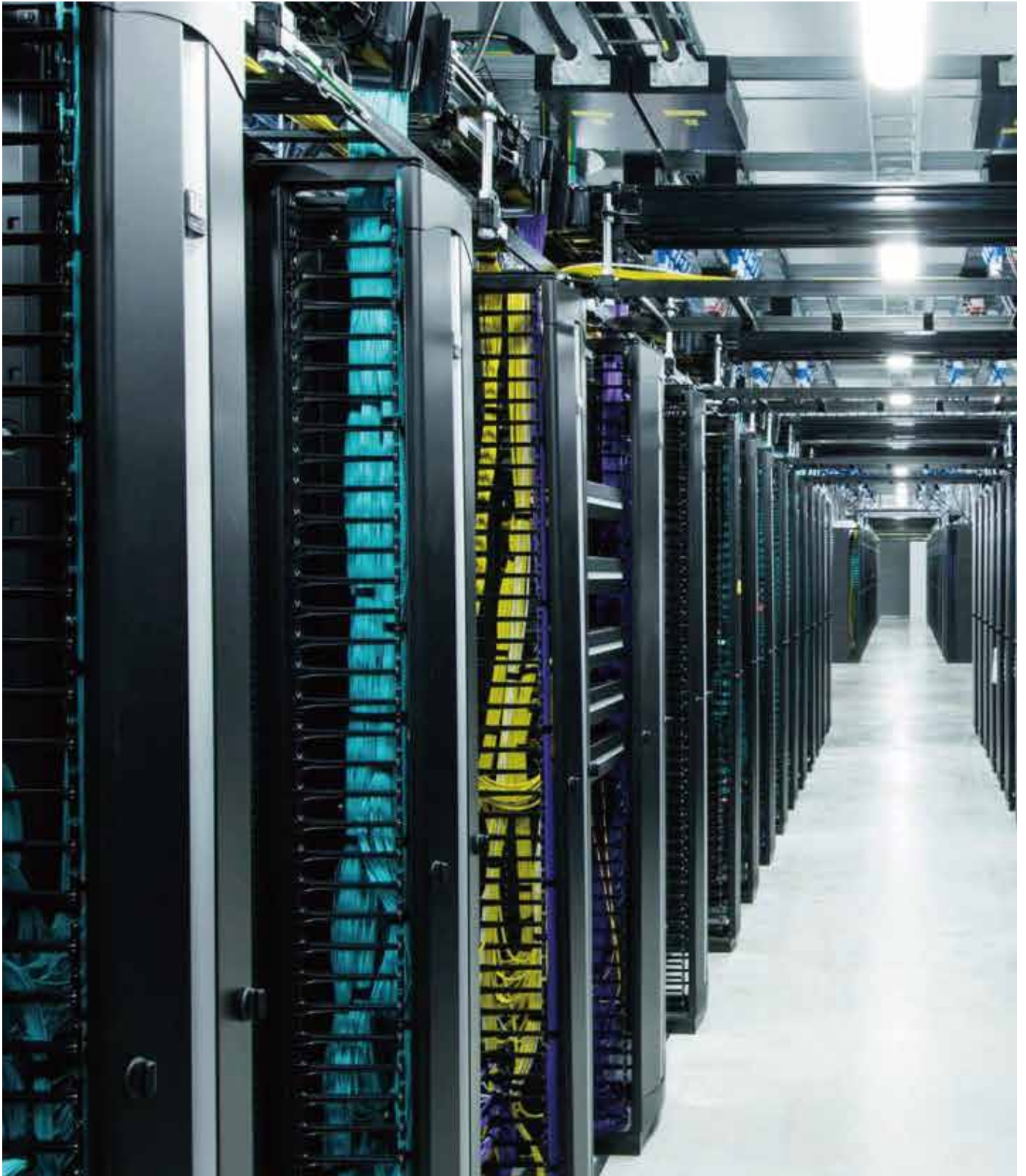
- 热插拔 SFP 封装
- 符合 SFP MSA
- 紧凑型RJ-45连接器
- 低电磁干扰全金属外壳
- IIC管理接口
- +3.3V单电源供电
- 工作温度范围:0~+70°C、-40~+85°C
- 符合RoHS 标准

- Hot-pluggable SFP package
- Compliant with SFP MSA
- Compact RJ-45 connector assembly
- Fully metallic enclosure for low EMI
- Interface for management and diagnostic monitor
- Single +3.3V power supply
- Operating temperature range:0~70°C or -40~+85°C optional
- RoHS compliant

Part Number	Package	Distance	Data Rate	Connector	Tx_Disable	Rx_LOS
OP3401	SFP	100M	10/100/1000Mb/s	RJ45	YES	YES
OP3401-1	SFP	100M	10/100/1000Mb/s	RJ45	YES	NO
OP3401-2	SFP	100M	10/100/1000Mb/s	RJ45	NO	YES
OP3401-3	SFP	100M	10/100/1000Mb/s	RJ45	NO	NO
OP3401G	SFP	100M	纯1000Mb/s	RJ45	YES	YES
OP3401G-1	SFP	100M	纯1000Mb/s	RJ45	YES	NO
OP3401G-2	SFP	100M	纯1000Mb/s	RJ45	NO	YES
OP3401G-3	SFP	100M	纯1000Mb/s	RJ45	NO	NO
OP3901	SFP+	30M	10Gb/s	RJ45	YES	YES

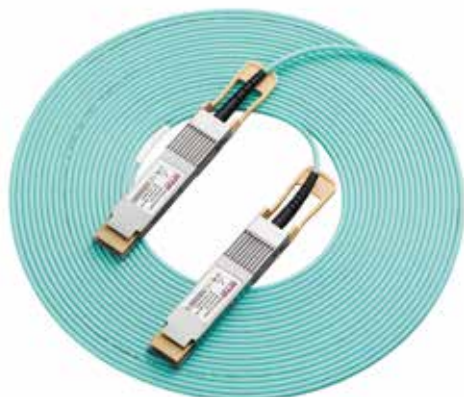


AOC/DAC SOLUTIONS



AOC

SOLUTIONS



应用 Application

数据中心
高性能计算机互联
超算中心 (InfiniBand)
Data center
HPC interconnection

Features

- 全双工有源光缆
 - 热插拔封装
 - 高可靠性850nm VCSEL技术
 - 内置数字诊断功能
 - +3.3V单电源供电
 - 低功耗
 - 工作温度范围:0~70°C
 - 符合RoHS标准
- Full-duplex active optical cable
 - Hot pluggable form factor
 - High reliable 850nm VCSEL technology
 - Built-in digital diagnostic functions
 - Single +3.3V power supply
 - Low power consumption
 - Operating temperature range:0~70°C
 - RoHS 6 compliant

Part Number	Package	Data Rate	Distance	Tx	Rx	Cable
OPOMTx-AOC	OSFP	800Gb/s	0.5~100M	VCSEL	PIN	MM
OPDJTx-AOC	QSFP-DD	400Gb/s	0.5~100M	VCSEL	PIN	MM
OPQHTX-AOC	QSFP56	200Gb/s	0.5~100M	VCSEL	PIN	MM
OPQHTx-2-AOC	QSFP56→2*QSFP56	200Gb/s	0.5~100M	VCSEL	PIN	MM
OPQHTXX-AOC-YZ	QSFP56	200Gb/s	0.5~100M	VCSEL	PIN	MM
OPQETx-AOC	QSFP28	100Gb/s	0.5~100M	VCSEL	PIN	MM
OPQETx-4-AOC	QSFP28→4*SFP28	100Gb/s	0.5~100M	VCSEL	PIN	MM
OPQCTx-AOC	QSFP+	40Gb/s	0.5~150M	VCSEL	PIN	MM
OPQCTx-4-AOC	QSFP+→4*SFP+	40Gb/s	0.5~150M	VCSEL	PIN	MM
OP30Tx-AOC	SFP28	25Gb/s	0.5~100M	VCSEL	PIN	MM
OP39Tx-AOC	SFP+	10Gb/s	0.5~300M	VCSEL	PIN	MM

注:除表格列出的产品,如有其他需求,请咨询我们销售人员。

Note:In addition to the products listed in the table, if any other needs, please contact our sales .



应用 Application

数据中心/Data Center
超算中心/InfiniBand

DAC SOLUTIONS

Features

- 全双工直连铜缆
 - 热插拔封装
 - +3.3V单电源供电
 - 低串扰
 - 低功耗
 - 工作温度范围: 0~70°C
 - 符合RoHS标准
- Full duplex direct copper cable
 - Hot pluggable form factor
 - Single 3.3V power supply
 - Low crosstalk
 - Low power consumption
 - Operating temperature range: 0~70°C
 - RoHS compliant



Part Number	Package and Port Application	Data Rate	Distance	Rx	Rx	Cable
OPOMTx	800G OSFP Finned Top to 800G OSFP Finned Top	800Gb/s	0.5~2M	/	/	Copper
OPOMTx-2	800G OSFP Finned Top to 2x400G OSFP112-RHS	800Gb/s	0.5~2M	/	/	Copper
OPOMTx-2-Q112	800G OSFP-Finned top to 2x400G QSFP112	800Gb/s	0.5~2M	/	/	Copper
OPOJTx-O56	400G OSFP56 to 400G OSFP56	400Gb/s	0.5~3M	/	/	Copper
OPOJTx	400G OSFP112-RHS to 400G OSFP112-RHS	400Gb/s	0.5~2M	/	/	Copper
OPOJTx-Q112	400G OSFP112-RHS to 400G QSFP112	400Gb/s	0.5~2M	/	/	Copper
OPQJTx	400G QSFP112 to 400G QSFP112	400Gb/s	1.0~2M	/	/	Copper
OPDJTx	400G QSFP-DD to 400G QSFP-DD	400Gb/s	0.5~3M	/	/	Copper
OPDJTx-4-Q56	400G QSFP-DD to 4x100G QSFP56	400Gb/s	0.5~3M	/	/	Copper
OPDJTx-2-Q56	400G QSFP-DD to 2x200G QSFP56	400Gb/s	0.5~3M	/	/	Copper
OPQHTx	200G QSFP56 to 200G QSFP56	200Gb/s	0.5~3M	/	/	Copper
OPQHTx-2	200G QSFP56 to 2x100G QSFP56	200Gb/s	0.5~3M	/	/	Copper
OPDHTx	200G QSFP-DD to 200G QSFP-DD	200Gb/s	0.5~3M	/	/	Copper
OPQETx	100G QSFP28 to 100G QSFP28	100Gb/s	0.5~5M	/	/	Copper
OPQETx-4	100G QSFP28 to 4x25G SFP28	100Gb/s	0.5~5M	/	/	Copper
OPQCTx	40G QSFP+ to 40G QSFP+	40Gb/s	0.5~7M	/	/	Copper
OPQCTx-4	40G QSFP+ to 4x10G SFP+	40Gb/s	0.5~7M	/	/	Copper
OP30Tx	25G SFP28+ to 25G SFP28	25Gb/s	0.5~5M	/	/	Copper
OP39Tx	10G SFP+ to 10G SFP+	10Gb/s	0.5~7M	/	/	Copper

注: DAC其他分支应用, 请联系我司销售人员;

Note: DAC other branch applications, please contact our sales staff

50GHz ITU Grid DWDM Wavelength

Channel No.	Central Wavelength (nm)	Frequency (THz)	Channel No.	Central Wavelength (nm)	Frequency (THz)
21	1560.61	192.10	41	1544.53	194.10
21.5	1560.20	192.15	41.5	1544.13	194.15
22	1559.79	192.20	42	1543.73	194.20
22.5	1559.39	192.25	42.5	1543.33	194.25
23	1558.98	192.30	43	1542.94	194.30
23.5	1558.58	192.35	43.5	1542.54	194.35
24	1558.17	192.40	44	1542.14	194.40
24.5	1557.77	192.45	44.5	1541.75	194.45
25	1557.36	192.50	45	1541.35	194.50
25.5	1556.96	192.55	45.5	1540.95	194.55
26	1556.55	192.60	46	1540.56	194.60
26.5	1556.15	192.65	46.5	1540.16	194.65
27	1555.75	192.70	47	1539.77	194.70
27.5	1555.34	192.75	47.5	1539.37	194.75
28	1554.94	192.80	48	1538.98	194.80
28.5	1554.54	192.85	48.5	1538.58	194.85
29	1554.13	192.90	49	1538.19	194.90
29.5	1553.73	192.95	49.5	1537.79	194.95
30	1553.33	193.00	50	1537.40	195.00
30.5	1552.93	193.05	50.5	1537.00	195.05
31	1552.52	193.10	51	1536.61	195.10
31.5	1552.12	193.15	51.5	1536.22	195.15
32	1551.72	193.20	52	1535.82	195.20
32.5	1551.32	193.25	52.5	1535.43	195.25
33	1550.92	193.30	53	1535.04	195.30
33.5	1550.52	193.35	53.5	1534.64	195.35
34	1550.12	193.40	54	1534.25	195.40
34.5	1549.72	193.45	54.5	1533.86	195.45
35	1549.32	193.50	55	1533.47	195.50
35.5	1548.91	193.55	55.5	1533.07	195.55
36	1548.51	193.60	56	1532.68	195.60
36.5	1548.11	193.65	56.5	1532.29	195.65
37	1547.72	193.70	57	1531.90	195.70
37.5	1547.32	193.75	57.5	1531.51	195.75
38	1546.92	193.80	58	1531.12	195.80
38.5	1546.52	193.85	58.5	1530.72	195.85
39	1546.12	193.90	59	1530.33	195.90
39.5	1545.72	193.95	59.5	1529.94	195.95
40	1545.32	194.00	60	1529.55	196.00
40.5	1544.92	194.05	60.5	1529.16	196.05



100GHz ITU Grid DWDM Wavelength

Channel No.	Central Wavelength (nm)	Frequency (THz)	Channel No.	Central Wavelength (nm)	Frequency (THz)
17	1563.86	191.7	40	1545.32	194.0
18	1563.05	191.8	41	1544.53	194.1
19	1562.23	191.9	42	1543.73	194.2
20	1561.42	192.0	43	1542.94	194.3
21	1560.61	192.1	44	1542.14	194.4
22	1559.79	192.2	45	1541.35	194.5
23	1558.98	192.3	46	1540.56	194.6
24	1558.17	192.4	47	1539.77	194.7
25	1557.36	192.5	48	1538.98	194.8
26	1556.55	192.6	49	1538.19	194.9
27	1555.75	192.7	50	1537.40	195.0
28	1554.94	192.8	51	1536.61	195.1
29	1554.13	192.9	52	1535.82	195.2
30	1553.33	193.0	53	1535.04	195.3
31	1552.52	193.1	54	1534.25	195.4
32	1551.72	193.2	55	1533.47	195.5
33	1550.92	193.3	56	1532.68	195.6
34	1550.12	193.4	57	1531.90	195.7
35	1549.32	193.5	58	1531.12	195.8
36	1548.51	193.6	59	1530.33	195.9
37	1547.72	193.7	60	1529.55	196.0
38	1546.92	193.8	61	1528.77	196.1
39	1546.12	193.9			

CWDM Bail Color Remarks

Channel No.	Central Wavelength (nm)	Bail Color	Channel No.	Central Wavelength (nm)	Bail Color
27	1270	Light Purple	45	1450	Yellow Orange
29	1290	Sky Blue	47	1470	Gray
31	1310	Yellow Green	49	1490	Violet
33	1330	Yellow Ocher	51	1510	Blue
35	1350	Pink	53	1530	Green
37	1370	Beige	55	1550	Yellow
39	1390	White	57	1570	Orange
41	1410	Silver	59	1590	Red
43	1430	Black	61	1610	Brown

Explore the Way of Optics



四川省光为通信有限公司
OPWAY COMMUNICATION INC.

总部：四川省资阳市雁江区清泉组团片区标准化厂房二期9栋1-4层

分公司：深圳市南山区西丽百旺信工业园二期5栋3楼

武汉基地：武汉东湖新技术开发区光谷新动力10栋4-6层

电话：0755--86000303

邮箱：info@opwaytech.com

网址：www.opwaytech.com

Headquarters: Building 9th, Phase II of Standard Factory, Qingquan Industrial Zone, Yanjiang, Ziyang, Sichuan

Branch address: 3F, Building 5, Section 2, Baiwangxin High-Tech Industrial Park, 1002 Songbai Road, Nanshan, ShenZhen

Wuhan R&D production base: 4-6F, Building 10, Optical Valley New Power, Donghu New Technology Development zone, Wuhan